

***Clostridium* sp., Strain 7\_2\_43FAA**

**Catalog No. HM-36**

**Product Description:** *Clostridium* sp., strain 7\_2\_43FAA was obtained from biopsy tissue from the transverse colon of a patient with active Crohn's disease in Calgary, Alberta, Canada in 2007.

**Lot<sup>1</sup>: 59476567**

**Manufacturing Date: 15SEP2010**

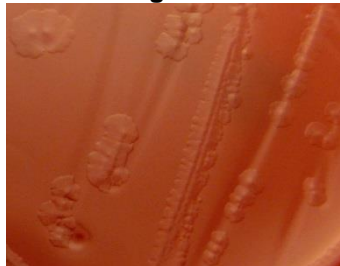
TEST	SPECIFICATIONS	RESULTS
<b>Phenotypic Analysis</b> Cellular morphology Colony morphology <sup>3</sup>	Gram-positive rod Report results	Gram-variable rod <sup>2</sup> Irregular, raised, glistening and gray (Figure 1)
<b>Genotypic Analysis</b> Sequencing of 16S ribosomal RNA gene (~ 1380 base pairs)	≥ 99% identical to depositor's sequence Consistent with <i>Clostridium</i> sp.	≥ 99% identical to depositor's sequence Consistent with <i>Clostridium</i> sp.
<b>Viability (post-freeze)<sup>3</sup></b>	Growth	Growth

<sup>1</sup>*Clostridium* sp., strain 7\_2\_43FAA was deposited by Emma Allen-Vercoe, Department of Molecular and Cellular Biology, University of Guelph, Guelph, Ontario, Canada. The deposited material was inoculated into Modified Reinforced Clostridial Broth (ATCC medium 2107) and incubated for 24 hours at 37°C and anaerobic atmosphere (80% N<sub>2</sub>:10% CO<sub>2</sub>:10% H<sub>2</sub>). The material from the initial growth was passaged once in Modified Reinforced Clostridial Broth for 24 hours at 37°C and anaerobic atmosphere to produce this lot.

<sup>2</sup>Clostridia are known to show Gram-variable staining ([Todar's Online Textbook of Bacteriology](#)).

<sup>3</sup>24 hours at 37°C and anaerobic atmosphere on Tryptic Soy Agar with 5% defibrinated sheep blood

**Figure 1**



**Date:** 14 JAN 2011

**Signature:**

**Title:** Technical Manager, BEI Authentication or designee

ATCC®, on behalf of BEI Resources, hereby represents and warrants that the material provided under this certificate has been subjected by ATCC® to the tests and procedures specified and that the results described, along with any other data provided in this certificate, are true and accurate to the best of ATCC®'s knowledge.

ATCC® is a trademark of the American Type Culture Collection.

You are authorized to use this product for research use only. It is not intended for human use.

