

Intimin Gamma C-terminal Extracellular Domain from *Escherichia coli* O157:H7 with N-terminal Histidine Tag, Expressed in *Escherichia coli*

Catalog No. NR-12192

This reagent is the tangible property of the U.S. Government.

Product Description: NR-12192 is a recombinant form of the C-terminal extracellular domain of the *Escherichia coli* (*E. coli*) O157:H7 outer membrane protein intimin gamma. The recombinant protein was expressed in *E. coli* and purified by nickel affinity chromatography.

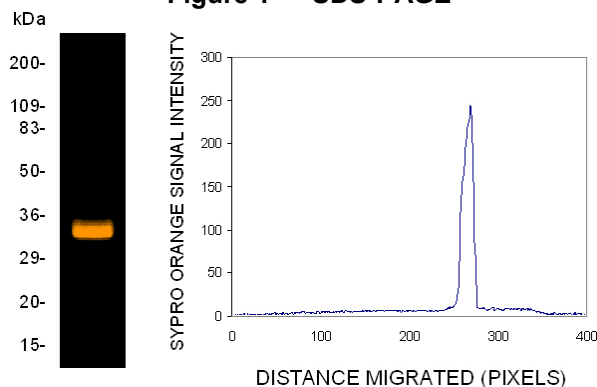
Lot: 58408291

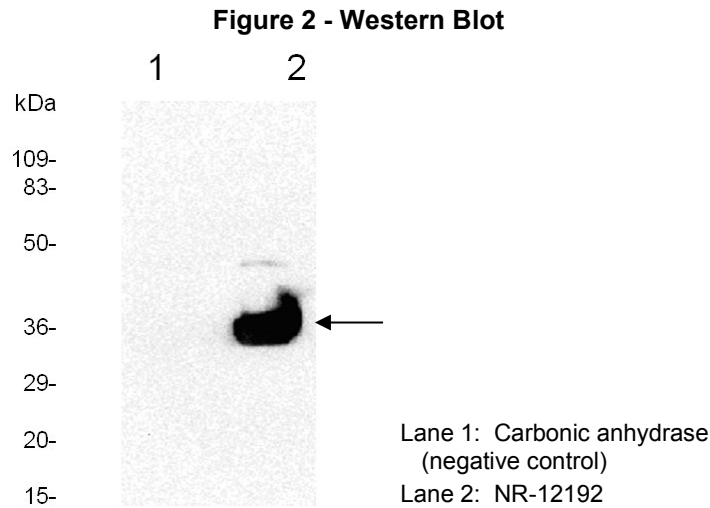
Manufacturing Date: 08APR2009

TEST	SPECIFICATIONS	RESULTS
Appearance	Clear and colorless, no particulate matter	Clear and colorless, no particulate matter
SDS-PAGE (SYPRO Orange densitometer scan)	32 kDa band represents > 95% of total staining intensity above background (Figure 1)	32 kDa band represents > 99% of total staining intensity above background (Figure 1)
SELDI-TOF Mass Spectrometry	Measured mass is within 5% of expected mass (31583 Da) based on amino acid sequence)	Measured mass (31733 Da) is within 0.5% of expected mass based on amino acid sequence
SELDI-TOF Mass Spectrometry of Protease Digested Protein	> 50% of total residues accounted for in peptides of expected mass	51% of total residues accounted for in peptides of expected mass
Functional Activity by Western Blot ¹ (Figure 2) Recombinant intimin gamma C-terminal extracellular domain (NR-12192) Carbonic anhydrase	Reactive Nonreactive	Reactive Nonreactive
Endotoxin Content (Limulus Amoebocyte Lysate Assay)	Report results	> 250 EU/mL but < 500 EU/mL
Sterility	0.22 µm filter sterilized	0.22 µm filter sterilized
UV Absorbance Ratio (A ₂₈₀ /A ₂₆₀)	Report results	3.11
Concentration by Bicinchoninic Acid Protein Assay	Report results	0.5 mg/mL

¹Using rabbit polyclonal antibody to intimin gamma (BEI Resources NR-12194)

Figure 1 — SDS-PAGE





Date: 17 DEC 2014

Signature:

Title:

Technical Manager, BEI Authentication or designee

ATCC[®], on behalf of BEI Resources, hereby represents and warrants that the material provided under this certificate has been subjected to the tests and procedures specified and that the results described, along with any other data provided in this certificate, are true and accurate to the best of ATCC[®]'s knowledge.

ATCC[®] is a trademark of the American Type Culture Collection.

You are authorized to use this product for research use only. It is not intended for human use.

