

Genomic RNA from Influenza B Virus, B/Malaysia/2506/04

Catalog No. NR-10048

This reagent is the tangible property of the U.S. Government.

Product Description: Genomic RNA was isolated from a preparation of pooled allantoic fluid from specific-pathogen free (SPF) embryonated chicken eggs¹ infected with influenza B virus, B/Malaysia/2506/04.

Lot²: 58774797

Manufacturing Date: 16SEP2009

| TEST | SPECIFICATIONS | RESULTS |
|---|--------------------|-------------------------------|
| Sequencing of Influenza B Specific Region Hemagglutinin gene (~ 770 nucleotides) | Influenza B virus | Influenza B virus |
| Total RNA Content by RiboGreen[®] Measurement (Viral, Cellular and Carrier) | Report results | 75.6 ng per 100 µL |
| Functional Activity by RT-PCR Amplification³ | ~ 1080 bp amplicon | ~ 1080 bp amplicon (Figure 1) |
| Virus Inactivation 10% of total yield incubated in SPF embryonated chicken eggs ¹ and evaluated by hemagglutination assay ⁴ | No virus detected | No virus detected |
| Sodium Azide Content | Report results | 0.0004% |

¹10 to 11-day-old SPF Fertile Chicken Eggs acquired from B&E Eggs, York Springs, Pennsylvania

²Nucleic acid was extracted from a preparation of reassortant influenza B virus, B/Malaysia/2506/04 (BEI Resources NR-9723; Lot 58155277) using a QIAamp[®] Viral RNA Mini kit (Qiagen 52906).

³Amplified using 1:10 dilution of NR-10048 and One-Step RT-PCR Kit (Qiagen 210212)

⁴This extraction procedure has been shown to consistently inactivate 100% of influenza viruses.

Date: 21 JAN 2011

Signature: *Dorothy C. Young*

Title: Technical Manager, BEI Authentication or designee

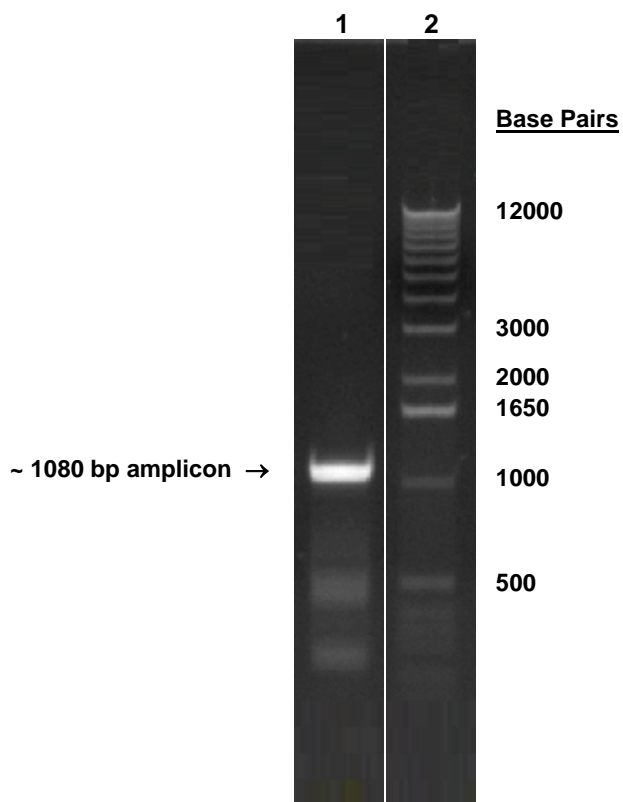
ATCC[®], on behalf of BEI Resources, hereby represents and warrants that the material provided under this certificate has been subjected to the tests and procedures specified and that the results described, along with any other data provided in this certificate, are true and accurate to the best of ATCC[®]'s knowledge.

ATCC[®] is a trademark of the American Type Culture Collection.

You are authorized to use this product for research use only. It is not intended for human use.



Figure 1



Lane 1: 10-fold dilution of NR-10048
Lane 2: Invitrogen™ TrackIt™ 1 Kb DNA Ladder