

**Staphylococcus caprae, Strain C87**

**Catalog No. HM-246**

**Product Description:** *Staphylococcus caprae* (*S. caprae*), strain C87 was isolated from expectorated sputum from a 31-year-old male patient with cystic fibrosis.

**Lot<sup>1</sup>: 59476560**

**Manufacturing Date: 06OCT2010**

TEST	SPECIFICATIONS	RESULTS
<b>Phenotypic Analysis</b> Cellular morphology Colony morphology <sup>2,3</sup>	Gram-positive cocci Report results	Gram-positive cocci Colony type 1: Circular, entire, white and large (Figure 1) Colony type 2: Circular, entire, white and small (Figure 1)
<b>Genotypic Analysis</b> Sequencing of 16S ribosomal RNA gene (~ 1420 base pairs)	≥ 99% identical to depositor's sequence Consistent with <i>S. caprae</i>	≥ 99% identical to depositor's sequence Consistent with <i>S. caprae</i> <sup>4</sup>
<b>Viability (post-freeze)<sup>2</sup></b>	Growth	Growth

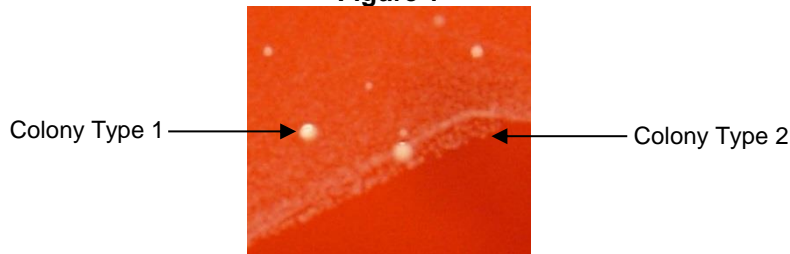
<sup>1</sup>*S. caprae*, strain C87 was deposited by Professor Michael G. Surette, Department of Microbiology & Infectious Diseases, University of Calgary, Alberta, Canada. HM-246 was produced by inoculation of the deposited material into Tryptic Soy Broth and grown 24 hours at 37°C. Broth inoculum was added to Kolles which were grown 24 hours at 37°C to produce this lot.

<sup>2</sup>24 hours at 37°C and aerobic atmosphere on Tryptic Soy Agar with 5% sheep blood

<sup>3</sup>Two colony types were observed. Plating of the individual colony types showed that they reverted to the mixed colony type. The 16S ribosomal RNA gene of each colony type was sequenced and determined to be consistent with *S. caprae*.

<sup>4</sup>Also consistent with *Staphylococcus capitis* and *Staphylococcus epidermidis*

**Figure 1**



**Date:** 08 FEB 2011

**Signature:**

**Title:** Technical Manager, BEI Authentication or designee

ATCC®, on behalf of BEI Resources, hereby represents and warrants that the material provided under this certificate has been subjected by ATCC® to the tests and procedures specified and that the results described, along with any other data provided in this certificate, are true and accurate to the best of ATCC®'s knowledge.

ATCC® is a trademark of the American Type Culture Collection.

You are authorized to use this product for research use only. It is not intended for human use.

