

***Klebsiella pneumoniae*, Isolate 8**

Catalog No. NR-15417

Product Description: *Klebsiella pneumoniae* (*K. pneumoniae*), isolate 8 contains the β -lactamase carbapenemase (*bla*_{KPC}) gene.

Lot¹: 58855081

Manufacturing Date: 23OCT2009

TEST	SPECIFICATIONS	RESULTS
Phenotypic Analysis Cellular morphology Colony morphology ² Analytical profile index (API [®] 20 E) Antibiotic resistance ³ Penicillin family ⁴ Penicillin family/ β -lactamase inhibitor combinations ⁵ Cephalosporin family ⁶ Aminoglycoside family Tobramycin Amikacin Gentamicin Carbapenem family ⁷ Fluoroquinolone family ⁸ Tetracycline Tigecycline Trimethoprim/sulfamethoxazole combination Nitrofurantoin Monobactam (aztreonam) Extended spectrum β -lactamase	Gram-negative rod Report results Consistent with <i>K. pneumoniae</i> Report results Report results Report results Report results Report results Report results Report results Report results Report results Report results Report results Report results Report results Report results Report results	Gram-negative rod Circular, convex, entire, translucent and cream (Figure 1) Consistent with <i>K. pneumoniae</i> Resistant Resistant Resistant Resistant Sensitive Resistant Resistant Resistant Sensitive Sensitive Resistant Resistant Resistant Negative
Genotypic Analysis Sequencing of 16S ribosomal RNA gene (~ 1410 bp) RiboPrinter Microbial Characterization System	Consistent with <i>K. pneumoniae</i> Consistent with <i>K. pneumoniae</i>	Consistent with <i>K. pneumoniae</i> Consistent with <i>K. pneumoniae</i>
PCR Assay of Extracted DNA Presence of β -lactamase (<i>bla</i> _{KPC}) gene ⁹	~ 1000 bp amplicon	~ 1000 bp amplicon
Viability (post-freeze)²	Growth	Growth

¹NR-15417 was produced by inoculation of the deposited material into Tryptic Soy Broth and incubated for 24 hours at 37°C in an aerobic atmosphere. Broth was added to Kolles and incubated for 24 hours at 37°C in an aerobic atmosphere to produce this lot.

²24 hours at 37°C and aerobic atmosphere on Tryptic Soy Agar

³Vitek 2 Cards AST-EXN7 and AST-GN24

⁴Penicillin family members tested include: Ampicillin, Ticarcillin, and Piperacillin

⁵Penicillin family/ β -lactamase inhibitor combinations tested include: Ampicillin/Sulbactam, Amoxicillin/Clavulanic Acid, Ticarcillin/Clavulanic Acid, and Piperacillin/Tazobactam.

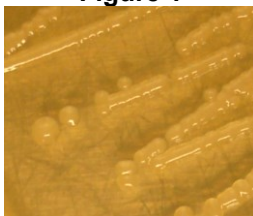
⁶Cephalosporin family members include: Cefotaxime, Ceftizoxime, Cefazolin, Cefuroxime, Cefuroxime Axetil, Cefotetan, Ceftazidime, Ceftriaxone, Cefepime, Cefalotin, Cefoxitin and Cefpodoxime

⁷Carbapenem family members include: Imipenem, Meropenem and Ertapenem

⁸Fluoroquinolone family members tested include: Moxifloxacin, Naladixic Acid, Ciprofloxacin, Levofloxacin, and Norfloxacin

⁹Yigit, H. et al. "Novel Carbapenem-Hydrolyzing β -Lactamase, KPC-1, from a Carbapenem-Resistant Strain of *Klebsiella pneumoniae*." *Antimicrob. Agents Chemother.* 45 (2001): 1151-1161. PubMed: 11257029.

Figure 1



Date: 11 FEB 2011

Signature:



Title: Technical Manager, BEI Authentication or designee

ATCC®, on behalf of BEI Resources, hereby represents and warrants that the material provided under this certificate has been subjected to the tests and procedures specified and that the results described, along with any other data provided in this certificate, are true and accurate to the best of ATCC®'s knowledge.

ATCC® is a trademark of the American Type Culture Collection.

You are authorized to use this product for research use only. It is not intended for human use.

