

**Genomic DNA from *Francisella tularensis* subsp. *novicida*, Strain ΔIglB**

**Catalog No. NR-13358**

**Product Description:** Genomic DNA was isolated from a preparation of *Francisella tularensis* (*F. tularensis*) subsp. *novicida*, strain ΔIglB. *F. tularensis* subsp. *novicida*, strain ΔIglB is a transposon mutant of the wild-type strain U112, in which the *iglB* gene region has been replaced with a mini-Tn5 insert, rendering it resistant to kanamycin

**Lot<sup>1</sup>: 58607116**

**Manufacturing Date: 24JUL2009**

TEST	SPECIFICATIONS	RESULTS
<b>Sequencing of 16S Ribosomal RNA Gene</b> (~ 1440 base pairs)	Identical to BEI Resources NR-9709 Consistent with <i>F. tularensis</i>	Identical to BEI Resources NR-9709 Consistent with <i>F. tularensis</i>
<b>Agarose Gel Electrophoresis</b>	High molecular weight chromosomal DNA	High molecular weight chromosomal DNA (Figure 1)
<b>Concentration by PicoGreen<sup>®</sup> Measurement</b>	4 to 6 µg in 25 to 100 µL per vial	5.6 µg in 72 µL per vial (78 µg/mL)
<b>Functional Activity by PCR Amplification</b> 16S ribosomal RNA gene	~ 1500 bp amplicon	~ 1500 bp amplicon
<b>Molecular Subtyping by PCR Amplification of Subspecies-Specific Sequence from Extracted DNA<sup>2</sup></b>	~ 1500 bp amplicon (subsp. <i>tularensis</i> ) ~ 900 bp amplicon (subsp. <i>holarctica</i> ) ~ 3300 bp amplicon (subsp. <i>novicida</i> )	~ 3300 bp amplicon (subsp. <i>novicida</i> )
<b>OD<sub>260</sub>/OD<sub>280</sub> Ratio</b>	1.7 to 1.9	1.8
<b>Bacterial Inactivation</b> 10% of total yield plated on Chocolate Agar <sup>3,4</sup>	No viable bacteria detected	No viable bacteria detected

<sup>1</sup>NR-13358 was produced by inoculation of the deposited material into Brain Heart Infusion Broth and grown 24 hours at 37°C. Broth inoculum was added to Chocolate agar Kolles which were grown 24 hours at 37°C and genomic DNA was extracted using proprietary technology.

<sup>2</sup>Broekhuijsen, M., et al. "Genome-Wide DNA Microarray Analysis of *Francisella tularensis* Strains Demonstrates Extensive Genetic Conservation within the Species but Identifies Regions that are Unique to the Highly Virulent *F. tularensis* subsp. *tularensis*." *J. Clin. Microbiol.* 41 (2003): 2924-2931. PubMed: 12843022.

<sup>3</sup>Incubated for 7 days at 37°C and aerobic atmosphere

<sup>4</sup>An extraction procedure was used that has been shown to consistently inactivate 100% of Gram-positive and Gram-negative bacteria.

**Date:** 01 MAR 2011

**Signature:** 

**Title:** Technical Manager, BEI Authentication or designee

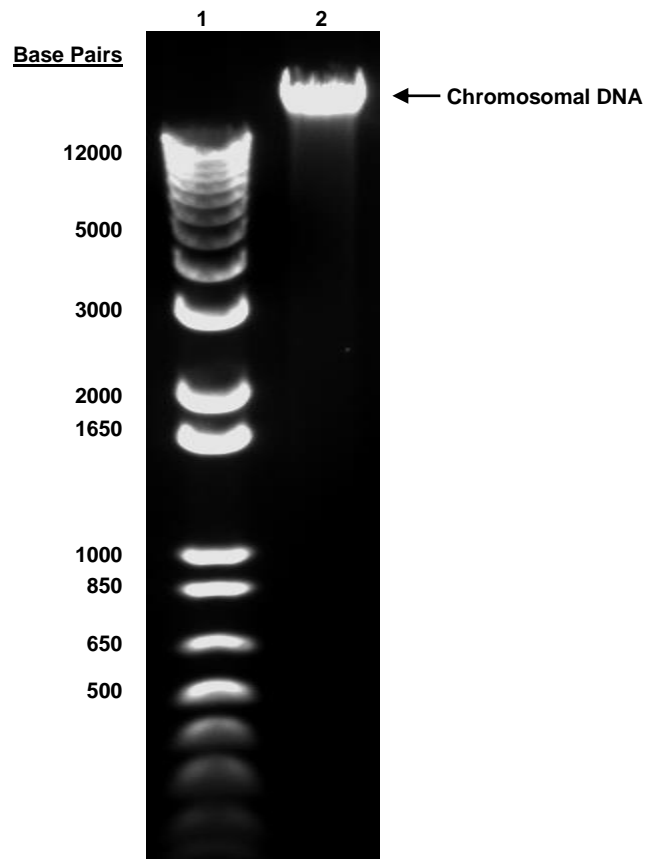
ATCC<sup>®</sup>, on behalf of BEI Resources, hereby represents and warrants that the material provided under this certificate has been subjected to the tests and procedures specified and that the results described, along with any other data provided in this certificate, are true and accurate to the best of ATCC<sup>®</sup>'s knowledge.

ATCC<sup>®</sup> is a trademark of the American Type Culture Collection.

You are authorized to use this product for research use only. It is not intended for human use.



Figure 1



Lane 1: Invitrogen™ TrackIt 1 Kb Plus DNA Ladder™  
Lane 2: 200 ng of NR-13358