

**Genomic DNA from *Listeria monocytogenes*, Strain FSL N1-017**

**Catalog No. NR-13348**

**Product Description:** Genomic DNA was obtained from a preparation of *Listeria monocytogenes* (*L. monocytogenes*), strain FSL N1-017.

**Lot<sup>1</sup>: 59437961**

**Manufacturing Date: 07FEB2011**

TEST	SPECIFICATIONS	RESULTS
<b>Sequencing of 16S Ribosomal RNA Gene</b> ( ~ 1500 bp)	Consistent with <i>L. monocytogenes</i>	Consistent with <i>L. monocytogenes</i> <sup>2</sup>
<b>Agarose Gel Electrophoresis</b>	High molecular weight chromosomal DNA	High molecular weight chromosomal DNA (Figure 1)
<b>Concentration by PicoGreen<sup>®</sup> Measurement</b>	0.7 to 1.5 µg in 25 to 100 µL per vial	0.73 µg in 68 µL per vial (11 µg/mL)
<b>Functional Activity by PCR Amplification</b> 16S ribosomal RNA gene	~ 1500 bp amplicon	~ 1500 bp amplicon
<b>OD<sub>260</sub>/OD<sub>280</sub> Ratio</b>	1.7 to 2.0	1.7
<b>Bacterial Inactivation</b> 10% of total yield plated on Tryptic Soy Agar with 5% sheep blood <sup>3,4</sup>	No viable bacteria detected	No viable bacteria detected

<sup>1</sup>*L. monocytogenes*, strain FSL N1-017 was deposited in 2009 by Dr. Mark Wiedmann, Department of Food Science, Cornell University, Ithaca, New York. The bacterial preparation used for extraction of genomic DNA was produced by Brain Heart Infusion broth culture of the NR-13231 (Lot: 58580365). After incubation for 24 hours at 37°C in an aerobic atmosphere, genomic DNA was extracted using proprietary technology.

<sup>2</sup>Also consistent with other *Listeria* species

<sup>3</sup>7 days at 37°C in an aerobic atmosphere

<sup>4</sup>An extraction procedure was used that has been shown to consistently inactivate 100% of Gram-negative and Gram-positive bacteria.

**Date:** 06 MAY 2011

**Signature:** 

**Title:** Technical Manager, BEI Authentication or designee

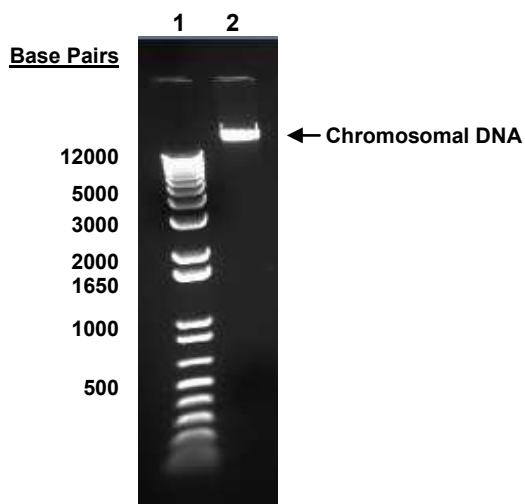
ATCC<sup>®</sup>, on behalf of BEI Resources, hereby represents and warrants that the material provided under this certificate has been subjected to the tests and procedures specified and that the results described, along with any other data provided in this certificate, are true and accurate to the best of ATCC<sup>®</sup>'s knowledge.

ATCC<sup>®</sup> is a trademark of the American Type Culture Collection.

You are authorized to use this product for research use only. It is not intended for human use.



Figure 1



Lane 1: Invitrogen™ TrackIt™ 1 Kb Plus DNA Ladder

Lane 2: 200 ng of NR-13348