

Genomic DNA from *Rickettsia sibirica*, Strain 246

Catalog No. NR-10486

Product Description: Genomic DNA was isolated from a preparation of cell lysate and supernatant from African green monkey kidney cells (Vero)¹ infected with *Rickettsia sibirica* (*R. sibirica*), strain 246.

Lot²: 58677664

Manufacturing Date: 10 DEC 2010

TEST	SPECIFICATIONS	RESULTS
Sequencing of <i>R. sibirica</i> Specific Region Citrate synthase gene (964 nucleotides)	Consistent with <i>R. sibirica</i> (GenBank: U59734)	Identical to <i>R. sibirica</i> (GenBank: U59734)
Total DNA Content by PicoGreen[®] Measurement (Bacterial and Cellular)	Report results	5.6 ng per 100 µL
Functional Activity by PCR Amplification³	~ 1150 bp amplicon	~ 1150 bp amplicon (Figure 1)
Virus Inactivation⁴ 10% of total yield inoculated on African green monkey kidney cells ¹ and examined for cytopathic effect	No infectious bacteria detected	No infectious bacteria detected

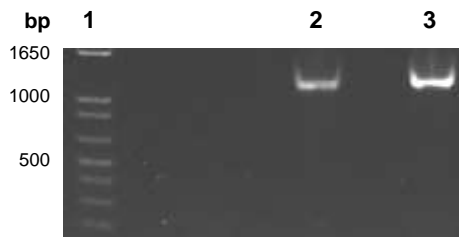
¹Vero cells: ATCC[®] CCL-81[™]

²Nucleic acid was extracted from a preparation of *R. sibirica* (BEI Resources NR-10453; Lot 58365935) using a QIAamp[®] Viral RNA Mini kit (Qiagen 52906) and diluted with TE buffer (Ambion[®] AM9861).

³Amplified using 5 µL of NR-10486 in a 50 µL reaction

⁴This extraction procedure has been shown to consistently inactivate 100% of Rickettsiales.

Figure 1



Lane 1: Invitrogen[™] TrackIt[™] 1 Kb Plus DNA Ladder
 Lane 2: NR-10486
 Lane 3: NR-10453 positive control

Date: 24 MAR 2011

Signature:

Dorothy C. Young

Title:

Technical Manager, BEI Authentication or designee

ATCC[®], on behalf of BEI Resources, hereby represents and warrants that the material provided under this certificate has been subjected to the tests and procedures specified and that the results described, along with any other data provided in this certificate, are true and accurate to the best of ATCC[®]'s knowledge.

ATCC[®] is a trademark of the American Type Culture Collection.

You are authorized to use this product for research use only. It is not intended for human use.

