

Genomic DNA from *Yersinia pestis*, Strain A1122

Catalog No. NR-2644

Product Description: Genomic DNA was isolated from a preparation of *Yersinia pestis*, strain A1122.

Lot¹: 5107283

Manufacturing Date: 03MAR2006

TEST	SPECIFICATIONS	RESULTS
Sequencing of 16S Ribosomal RNA Gene (~ 480 base pairs)	Consistent with <i>Yersinia pestis</i> Identical to GenBank AF282306	Consistent with <i>Yersinia pestis</i> ² Identical to GenBank AF282306
Presence of Plasmids Confirmed by PCR Amplification 110 kb plasmid 19 kb plasmid	Confirmed Confirmed	Confirmed Confirmed
Agarose Gel Electrophoresis	High molecular weight chromosomal DNA	High molecular weight chromosomal DNA (Figure 1)
Concentration by PicoGreen® Measurement	4 to 6 µg in 25 to 100 µL per vial	6 µg in 55 µL per vial (109 µg/mL)
Functional Activity by PCR Amplification 16S ribosomal RNA gene Virulence markers on plasmids 110 kb plasmid 19 kb plasmid	~ 1500 bp amplicon ~ 1200 bp amplicon ~ 400 bp amplicon	~ 1500 bp amplicon ~ 1200 bp amplicon ~ 400 bp amplicon
OD₂₆₀/OD₂₈₀ Ratio	1.7 to 1.9	1.8
Bacterial Inactivation 10% of total yield plated on Trypticase Soy Agar and incubated for 7 days at 37°C and aerobic atmosphere; limit of detection is 0.2 colony-forming units per vial	No viable bacteria detected	No viable bacteria detected

¹The bacterial preparation used for extraction of genomic DNA was produced by culture of BEI Resources NR-15 on Trypticase Soy Agar. After incubation for 26 hours at 37°C and aerobic atmosphere, genomic DNA was extracted using proprietary technology.

²Also consistent other *Yersinia* species.

Date: 31 AUG 2006

Signature: Signature on File

Title: Technical Manager, BEI Authentication

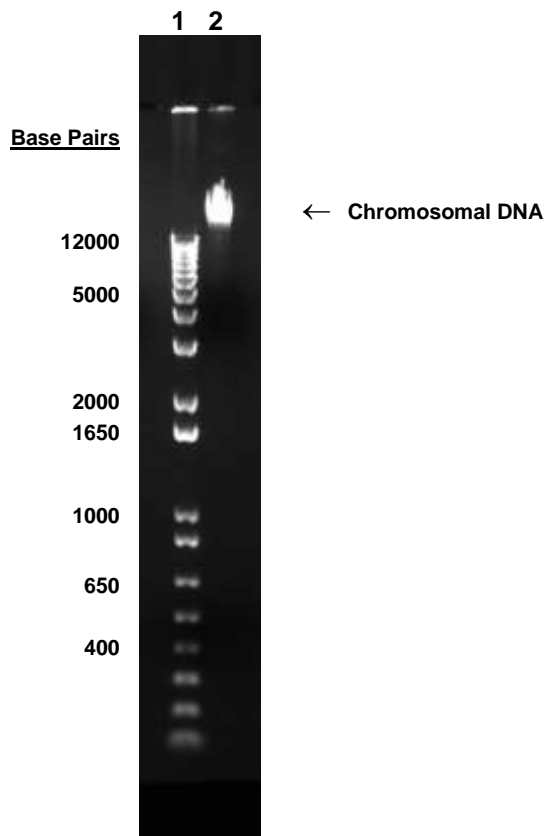
ATCC®, on behalf of BEI Resources, hereby represents and warrants that the material provided under this certificate has been subjected to the tests and procedures specified and that the results described, along with any other data provided in this certificate, are true and accurate to the best of ATCC®'s knowledge.

ATCC® is a trademark of the American Type Culture Collection.

You are authorized to use this product for research use only. It is not intended for human use.



Figure 1



Lane 1: Invitrogen™ 1 Kb Plus DNA Ladder™
Lane 2: 200 ng of NR-2644