

Vector pLNCX2 Containing HLA-A*0203 Allele

Catalog No. NR-2779

Product Description: The HLA-A*0203 allele from a human Major Histocompatibility Complex (MHC) Class I human leukocyte antigen (HLA)-homozygous human B-lymphoblastoid cell line (B-LCL) was amplified by PCR, gel purified, and cloned into the Clontech Laboratories vector, pLNCX2 by the International Histocompatibility Working Group (IHWG). The plasmid was produced in *Escherichia coli* and extracted.¹

Lot¹: 58304225

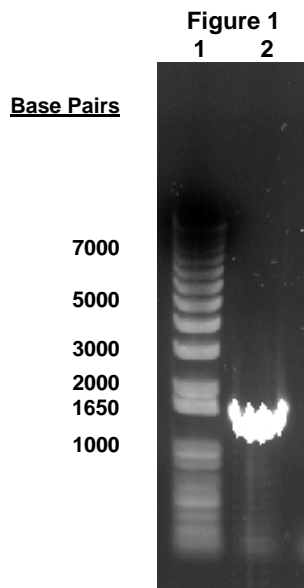
Manufacturing Date: 09SEP2008

TEST	SPECIFICATIONS	RESULTS
PCR Amplification and Sequencing of HLA Insert	~ 1100 bp amplicon Human MHC Class I HLA-A	~ 1100 bp amplicon (Figure 1) Human MHC Class I HLA-A
Agarose Gel Electrophoresis Digestion with <i>HindIII</i> ² and <i>NotI</i> ³	~ 6100 bp vector; ~ 1100 bp insert	~ 6100 bp vector; ~ 1100 bp insert (Figure 2)
PicoGreen[®] Measurement DNA content DNA concentration	Report results Report results	168 ng 168 ng per 40 µL (4.2 µg per mL)
Effective Bacterial Transformation	≥ 100 colonies per ng	≥ 100 colonies per ng

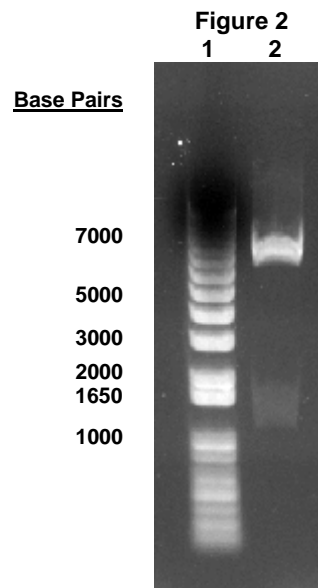
¹Produced in *Escherichia coli* DH5α™-T1^R cells (Invitrogen™ 12297-016) and extracted using the EndoFree[®] Plasmid Maxi Kit (QIAGEN[®] 12362)

²*HindIII* (New England BioLabs, Inc. R0104)

³*NotI* (New England BioLabs, Inc. R0189)



Lane 1: Invitrogen™ TrackIt™ 1 Kb Plus DNA Ladder
Lane 2: PCR Amplicon of HLA Insert



Lane 1: Invitrogen™ TrackIt™ 1 Kb Plus DNA Ladder
Lane 2: NR-2779 digested with *HindIII* and *NotI*

Certificate of Analysis for NR-2779

Date: 20 JUL 2011

Signature: 

Title: Technical Manager, BEI Authentication or designee

ATCC[®], on behalf of BEI Resources, hereby represents and warrants that the material provided under this certificate has been subjected to the tests and procedures specified and that the results described, along with any other data provided in this certificate, are true and accurate to the best of ATCC[®]'s knowledge.

ATCC[®] is a trademark of the American Type Culture Collection.

You are authorized to use this product for research use only. It is not intended for human use.

