

**Lactobacillus jensenii, Strain EX849587VC06**

**Catalog No. HM-374**

**Product Description:** *Lactobacillus jensenii* (*L. jensenii*), strain EX849587VC06 was isolated from a human mid-vaginal wall in March 2010, in Richmond, Virginia.

**Lot<sup>1,2</sup>: 59852019**

**Manufacturing Date: 01APR2011**

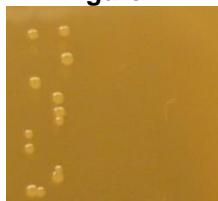
TEST	SPECIFICATIONS	RESULTS
<b>Phenotypic Analysis</b> Cellular morphology Colony morphology <sup>3</sup>	Gram-positive rod Report results	Gram-positive rod Circular, flat, entire and cream (Figure 1)
<b>Genotypic Analysis</b> Sequencing of 16S ribosomal RNA gene (~ 1430 base pairs)	≥ 99% identical to depositor's sequence Consistent with <i>L. jensenii</i>	Pending Consistent with <i>L. jensenii</i>
<b>Viability (post-freeze)<sup>3</sup></b>	Growth	Growth

<sup>1</sup>Quality control of HMP material is only performed to demonstrate that the material distributed by BEI Resources is identical to the deposited material. It should not be considered a complete characterization of the deposited organism.

<sup>2</sup>*L. jensenii*, strain EX849587VC06 was deposited by Professor Gregory A. Buck, Director, Center for the Study of Biological Complexity, Department of Microbiology and Immunology, Virginia Commonwealth University Medical Center, Richmond, Virginia. The deposited material was inoculated into Lactobacilli MRS Broth and incubated for 24 hours at 37°C in an aerobic atmosphere with 5% CO<sub>2</sub>. The material from the initial growth was passaged once in Lactobacilli MRS Broth for 24 hours at 37°C in an aerobic atmosphere with 5% CO<sub>2</sub> to produce this lot.

<sup>3</sup>48 hours at 37°C in an aerobic atmosphere with 5% CO<sub>2</sub> on Lactobacilli MRS Agar

**Figure 1**



**Date:** 01 SEP 2011

**Signature:**

**Title:**

Technical Manager, BEI Authentication or designee

ATCC®, on behalf of BEI Resources, hereby represents and warrants that the material provided under this certificate has been subjected by ATCC® to the tests and procedures specified and that the results described, along with any other data provided in this certificate, are true and accurate to the best of ATCC®'s knowledge.

ATCC® is a trademark of the American Type Culture Collection.

You are authorized to use this product for research use only. It is not intended for human use.

