

***Clostridium difficile*, Isolate 12**

Catalog No. NR-13438

Product Description: *Clostridium difficile* (*C. difficile*), isolate 12 was obtained from a human patient from the Mid-Atlantic region of the United States in 2008/2009.

Lot¹: 59147478

Manufacturing Date: 12JAN2011

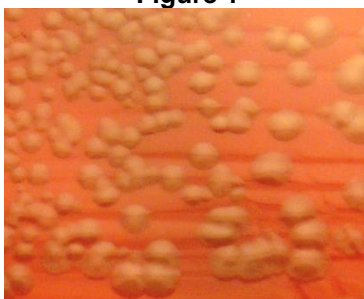
TEST	SPECIFICATIONS	RESULTS
Phenotypic Analysis² Cellular morphology Colony morphologies ³ Obligate Anaerobe Hemolysis ³ Chartreuse fluorescence on anaerobic blood agar ³ Biochemical tests: RapID™ ANA II Panel Esculin hydrolysis Gelatin hydrolysis	Gram-positive rod Report results Positive Report results Positive Consistent with <i>C. difficile</i> Positive Positive	Gram-positive rod Irregular, flat, undulate, opaque, and gray (Figure 1) Positive Non-hemolytic Positive Consistent with <i>C. difficile</i> Positive Positive
Genotypic Analysis Sequencing of 16S Ribosomal RNA Gene (~ 1390 base pairs)	Consistent with <i>C. difficile</i>	Consistent with <i>C. difficile</i>
Viability (post-freeze)³	Growth	Growth

¹The deposited material was inoculated into Modified Reinforced Clostridial Broth ([ATCC medium 2107](#)) and incubated for 48 hours at 37°C and anaerobic atmosphere (80% N₂:10% CO₂:10% H₂). The material from the initial growth was passaged three times in Modified Reinforced Clostridial Broth at 37°C and anaerobic atmosphere [80% N₂:10% CO₂:10% H₂]. NR-13438 was produced from the fourth passage.

²Specifications described in Holdeman, L. V., E. P. Cato, and W. E. C. Moore, Eds. *Anaerobe Laboratory Manual*. 4th ed., Blacksburg: Virginia Polytechnic Institute and State University, 1977.

³48 hours at 37°C and anaerobic atmosphere (80% N₂:10% CO₂:10% H₂) on CDC anaerobic blood agar

Figure 1



Date: 07 SEP 2011

Signature:

Title: Technical Manager, BEI Authentication or designee

ATCC®, on behalf of BEI Resources, hereby represents and warrants that the material provided under this certificate has been subjected to the tests and procedures specified and that the results described, along with any other data provided in this certificate, are true and accurate to the best of ATCC®'s knowledge.

ATCC® is a trademark of the American Type Culture Collection. You are authorized to use this product for research use only. It is not intended for human use.

