

***Lactobacillus crispatus*, Strain 125-2-CHN**

**Catalog No. HM-638**

**Product Description:** *Lactobacillus crispatus* (*L. crispatus*), strain 125-2-CHN is a vaginal isolate from a healthy Chinese woman obtained in 2007.

**Lot<sup>1,2</sup>: 59884456**

**Manufacturing Date: 13APR2011**

TEST	SPECIFICATIONS	RESULTS
<b>Phenotypic Analysis</b> Cellular morphology Colony morphology <sup>3</sup>	Gram-positive rod Report results	Gram-positive rod Irregular, flat and cream (Figure 1)
<b>Genotypic Analysis</b> Sequencing of 16S ribosomal RNA gene (~ 1420 base pairs)	≥ 99% identical to depositor's sequence Consistent with <i>L. crispatus</i>	Pending Consistent with <i>L. crispatus</i>
<b>Viability (post-freeze)<sup>4</sup></b>	Growth	Growth

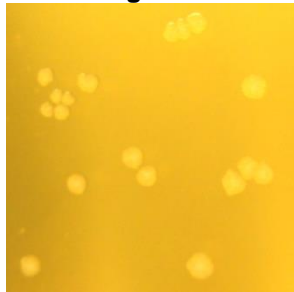
<sup>1</sup>Quality control of HMP material is only performed to demonstrate that the material distributed by BEI Resources is identical to the deposited material. It should not be considered a complete characterization of the deposited organism.

<sup>2</sup>*L. crispatus*, strain 125-2-CHN was deposited by Yang Yang Liu, Ph.D., Senior Scientist & Group Leader, Osel Inc., Santa Clara, California. The deposited material was inoculated into Lactobacilli MRS Broth and incubated for 24 hours at 37°C in an aerobic atmosphere with 5% CO<sub>2</sub>. The material from the initial growth was passaged once in Lactobacilli MRS Broth for 24 hours at 37°C in an aerobic atmosphere with 5% CO<sub>2</sub> to produce this lot.

<sup>3</sup>48 hours at 37°C in an aerobic atmosphere with 5% CO<sub>2</sub> on Lactobacilli MRS Agar

<sup>4</sup>24 hours at 37°C in an aerobic atmosphere with 5% CO<sub>2</sub> on Lactobacilli MRS Agar

**Figure 1**



**Date:** 14 SEP 2011

**Signature:** 

**Title:** Technical Manager, BEI Authentication or designee

ATCC®, on behalf of BEI Resources, hereby represents and warrants that the material provided under this certificate has been subjected to the tests and procedures specified and that the results described, along with any other data provided in this certificate, are true and accurate to the best of ATCC®'s knowledge.

ATCC® is a trademark of the American Type Culture Collection.

You are authorized to use this product for research use only. It is not intended for human use.

