

Candida albicans, Strain 12C

Catalog No. NR-29444

Product Description: *Candida albicans* (*C. albicans*), strain 12C is an oral isolate from a vaginitis patient collected in Ann Arbor, Michigan between 1990 and 1992. Strain 12C is a member of genetic clade I and has an **a/a** *MTL* genotype.

Lot¹: 60282429

Manufacturing Date: 16SEP2011

TEST	SPECIFICATIONS	RESULTS
Phenotypic Analysis Colony morphology ² CHROMagar Candida Testing ³ Biochemical tests: Vitek 2 Systems Version: 05.01 (YST card)	Report results Green colonies (<i>C. albicans</i>) Consistent with <i>C. albicans</i>	Globose to short-ovoid, usually single or budding, occasionally forming short chains (Figure 1A) Cream-coloured, smooth, dull, dome-shaped, often becoming wrinkled with a mycelia border (Figure 1B) Green colonies (<i>C. albicans</i>) Consistent with <i>C. albicans</i>
Genotypic Analysis Sequencing of partial 18S rRNA gene, internal transcribed spacer (ITS) 1, 5.8S rRNA gene, ITS 2, partial 28S rRNA (~ 460 base pairs) Sequencing of 26S rRNA gene (~ 540 base pairs)	Consistent with <i>C. albicans</i> Consistent with <i>C. albicans</i>	Consistent with <i>C. albicans</i> Consistent with <i>C. albicans</i>
Purity (7 days)⁴ Nutrient Broth with 0.1% Yeast Extract at 25°C Nutrient Broth with 0.1% Yeast Extract at 37°C	No bacterial growth No bacterial growth	No bacterial growth No bacterial growth
Viability (post-freeze)²	Growth	Growth

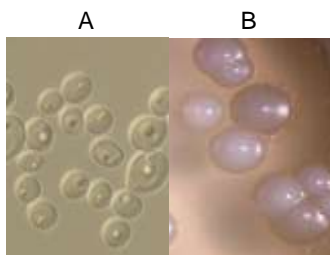
¹The deposited material was inoculated into Yeast Mold (YM) broth and incubated for 10 days at 25°C and aerobic atmosphere to produce this lot.

²3 days at 25°C and aerobic atmosphere on YM agar

³CHROMagar displays high sensitivity and specificity for three of the major *Candida* species (Odds, F. C., and R. Bernarts. "CHROMagar Candida, a New Differential Isolation Medium for the Presumptive Identification of Clinically Important *Candida* species." *J. Clin. Microbiol.* 32 (1994): 1923-1929. PubMed: 7989544.

⁴Clarity of broth was determined by visual inspection

Figure 1



Date: 06 JAN 2012

Signature:



Title: Technical Manager, BEI Authentication or designee

ATCC[®], on behalf of BEI Resources, hereby represents and warrants that the material provided under this certificate has been subjected to the tests and procedures specified and that the results described, along with any other data provided in this certificate, are true and accurate to the best of ATCC[®]'s knowledge.

ATCC[®] is a trademark of the American Type Culture Collection.

You are authorized to use this product for research use only. It is not intended for human use.

