

**Staphylococcus warneri, Strain SK66**

**Catalog No. HM-120**

**Product Description:** *Staphylococcus warneri* (*S. warneri*), strain SK66 was isolated from normal skin of the right arm of a 57-year-old man. This organism was deposited to BEI Resources as *S. warneri*, strain SK66, however it is referred to as *S. warneri*, strain L37603 in GenBank and the HMP catalog.

**Lot<sup>1,2</sup>: 60096253**

**Manufacturing Date: 22JUN2011**

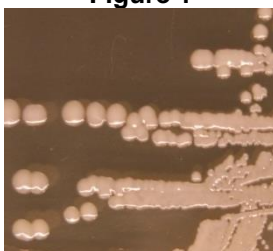
TEST	SPECIFICATIONS	RESULTS
<b>Phenotypic Analysis</b> Cellular morphology Colony morphology <sup>3</sup>  Hemolysis on blood agar Catalase	Gram-positive cocci Report results  Report results Positive	Gram-positive cocci Circular, low convex, entire and cream (Figure 1) Non-hemolytic Positive
<b>Genotypic Analysis</b> Sequencing of 16S ribosomal RNA gene (~ 1400 base pairs)	≥ 99% identical to GenBank: NZ_ACPZ01000009 ( <i>S. warneri</i> , strain L37603)	≥ 99% identical to GenBank: NZ_ACPZ01000009 ( <i>S. warneri</i> , strain L37603)
<b>Viability (post-freeze)<sup>3</sup></b>	Growth	Growth

<sup>1</sup>Quality control of HMP material is only performed to demonstrate that the material distributed by BEI Resources is identical to the deposited material. It should not be considered a complete characterization of the deposited organism.

<sup>2</sup>*S. warneri*, strain SK66 was deposited by Guillermo I. Perez-Perez, D.Sc., Associate Professor of Medicine, Departments of Medicine and Microbiology; School of Medicine, New York University, New York, New York. The deposited material was inoculated into Brain Heart Infusion Broth and grown 24 hours at 37°C in an aerobic atmosphere. Broth inoculum was added to Kolles which were grown 24 hours at 37°C to produce this lot.

<sup>3</sup>24 hours at 37°C in an aerobic atmosphere on Brain Heart Infusion Agar

Figure 1



**Date:** 23JAN 2012

**Signature:** 

**Title:** Technical Manager, BEI Authentication or designee

ATCC®, on behalf of BEI Resources, hereby represents and warrants that the material provided under this certificate has been subjected to the tests and procedures specified and that the results described, along with any other data provided in this certificate, are true and accurate to the best of ATCC®'s knowledge.

ATCC® is a trademark of the American Type Culture Collection. You are authorized to use this product for research use only. It is not intended for human use.

