

***Parabacteroides distasonis*, Strain 31\_2 (Deposited as *Porphyromonas* sp., Strain 31\_2)**

**Catalog No. HM-169**

**Product Description:** *Parabacteroides distasonis* (*P. distasonis*), strain 31\_2 was isolated from a human fecal sample. **HM-169 was deposited as *Porphyromonas* sp., however this organism has been reclassified since both the depositor's 16S ribosomal RNA gene sequence and the 16S ribosomal RNA gene sequence obtained from HM-169 align more favorably with *P. distasonis*.**

**Lot<sup>1,2</sup>: 59994657**

**Manufacturing Date: 12SEP2011**

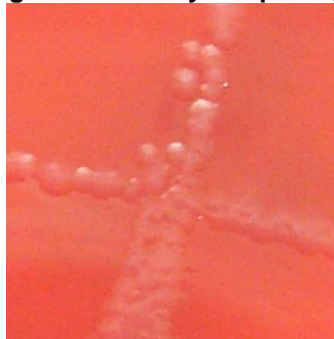
TEST	SPECIFICATIONS	RESULTS
<b>Phenotypic Analysis</b> Cellular morphology Colony morphology <sup>3</sup>	Report results Report results	Gram-negative rod Circular, convex, entire, glistening and clear (Figure 1)
<b>Genotypic Analysis</b> Sequencing of 16S ribosomal RNA gene (~ 1390 base pairs)	≥ 99% identical to depositor's sequence Consistent with <i>P. distasonis</i>	≥ 99% identical to depositor's sequence Consistent with <i>P. distasonis</i>
<b>Viability (post-freeze)<sup>3</sup></b>	Growth	Growth

<sup>1</sup>Quality control of HMP material is only performed to demonstrate that the material distributed by BEI Resources is identical to the deposited material. It should not be considered a complete characterization of the deposited organism.

<sup>2</sup>*P. distasonis* (deposited as *Porphyromonas* sp., strain 31\_2) was deposited by Professor Emma Allen-Vercoe, Department of Molecular and Cellular Biology, University of Guelph, Guelph, Ontario, Canada. HM-169 was produced by inoculation of the deposited material into Modified Chopped Meat Medium and incubated for 48 hours at 37°C and anaerobic atmosphere (80% N<sub>2</sub>:10% CO<sub>2</sub>:10% H<sub>2</sub>). The material from the initial growth was passaged once in Modified Chopped Meat Medium for 72 hours at 37°C in an anaerobic atmosphere to produce this lot.

<sup>3</sup>72 hours at 37°C and anaerobic atmosphere on Tryptic Soy Agar with 5% defibrinated sheep blood

**Figure 1: Colony Morphology**



**Date:** 03 JUN 2016

**Signature:**

BEI Resources Authentication

ATCC®, on behalf of BEI Resources, hereby represents and warrants that the material provided under this certificate has been subjected to the tests and procedures specified and that the results described, along with any other data provided in this certificate, are true and accurate to the best of ATCC®'s knowledge.

ATCC® is a trademark of the American Type Culture Collection.

You are authorized to use this product for research use only. It is not intended for human use.



**BEI Resources**

[www.beiresources.org](http://www.beiresources.org)

E-mail: [contact@beiresources.org](mailto:contact@beiresources.org)

Tel: 800-359-7370

Fax: 703-365-2898