

Gemella sanguinis, Strain M325

Catalog No. HM-241

Product Description: *Gemella sanguinis* (*G. sanguinis*), strain M325 was isolated from expectorated sputum from a 26-year-old female patient with cystic fibrosis.

Lot^{1,2}: 59925948

Manufacturing Date: 24JUN2011

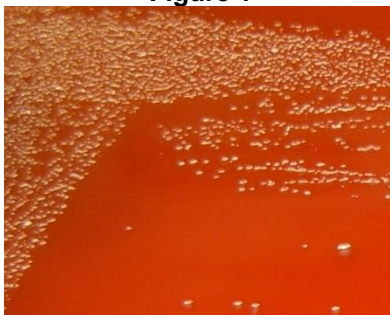
TEST	SPECIFICATIONS	RESULTS
Phenotypic Analysis Cellular morphology Colony morphology ³ Hemolysis on blood agar ³	Gram-positive cocci Report results Report results	Gram-positive cocci Circular and white (Figure 1) α-hemolytic
Genotypic Analysis Sequencing of 16S ribosomal RNA gene (~ 1390 base pairs) ⁴	≥ 99% identical to GenBank ACRY01000057 (<i>G. sanguinis</i> M325)	≥ 99% identical to GenBank ACRY01000057 (<i>G. sanguinis</i> M325)
Viability (post-freeze)³	Growth	Growth

¹Quality control of HMP material is only performed to demonstrate that the material distributed by BEI Resources is identical to the deposited material. It should not be considered a complete characterization of the deposited organism.

²*G. sanguinis*, strain M325 was deposited by Professor Michael G. Surette, Department of Microbiology & Infectious Diseases, University of Calgary, Alberta, Canada. The deposited material was inoculated into Brain Heart Infusion Broth and grown 48 hours at 37°C and 5% CO₂. Broth inoculum was added to Kolles which were grown 72 hours at 37°C and 5% CO₂ to produce this lot.

³48 hours at 37°C and 5% CO₂ on Tryptic Soy Agar with 5% defibrinated sheep blood

Figure 1



Date: 16 MAR 2012

Signature:

Title:

Technical Manager, BEI Authentication or designee

ATCC®, on behalf of BEI Resources, hereby represents and warrants that the material provided under this certificate has been subjected by ATCC® to the tests and procedures specified and that the results described, along with any other data provided in this certificate, are true and accurate to the best of ATCC®'s knowledge.

ATCC® is a trademark of the American Type Culture Collection.

You are authorized to use this product for research use only. It is not intended for human use.

