

Monoclonal Anti-*Mycobacterium leprae* ML0072/SodA, Clone CS-18 (produced *in vitro*)**Catalog No. NR-19847**

This reagent is the tangible property of the U.S. Government.

Product Description:

Antibody Class: IgG₁

Antibody Designation: CS-18

Monoclonal antibody to *Mycobacterium leprae* superoxide dismutase (ML0072/SodA; also known as 28 kDa protein) was produced in cell culture using a B cell hybridoma generated by the fusion of myeloma cells with immunized mouse splenocytes. The antiserum is reported to be active in Western Blot assays and to cross-react with *Mycobacterium tuberculosis* homologue Rv3846.

Lot: mm.CS-18.06.07.10JS

Manufacturing Date: 07JUN2010

QC testing was performed by Colorado State University under the Leprosy Research Support Contract (NIH). The Colorado State University documentation for lot mm.CS-18.06.07.10JS is attached.

ATCC[®], on behalf of BEI Resources, hereby represents and warrants that the material provided under this certificate has been subjected by the contractor to the tests and procedures specified and that the results described, along with any other data provided in this certificate, are true and accurate to the best of ATCC[®]'s knowledge.

ATCC[®] is a trademark of the American Type Culture Collection.

You are authorized to use this product for research use only. It is not intended for human use.



TB Contract Antibody QC Sheet

General Information: Mouse monoclonal antiserum to ML0072, superoxide dismutase, *sodA* (cross-reactive with *M. tb* homologue Rv3846)

Product: mouse monoclonal CS-18 6d culture supernatant
 Lot Number: mm.CS-18.06.07.10JS
 Species: *Mycobacterium leprae*
 Strain: N/A Type: mouse mAb

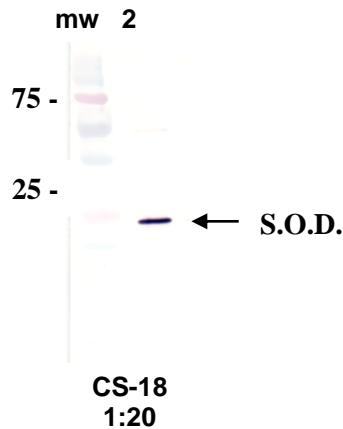
Production Information:

Cell Line: N/A Notebook/pp: John Spencer, Notebook #3, pp 146-147
 Amount of supernatant harvested: 80 mL Clarity: clear

QC Information: Western blot towards native *M. leprae* MLSA (cytosol) protein.
 Notebook/pp: same as above Titer: >1:20 Western blot: >1:20

Special Instructions: 1 mL, lyophilized; reconstitute with sterile distilled water; store frozen

QC Western blot: lane 1, mw markers; lane 2, 1.25 µg *M. leprae* native MLSA protein.



Aliquot Information: _____ 1 mL, lyophilized _____

John Spencer

John Spencer

Produced 6/7/10

Lab Supervisor / Date 6/23/10