

**Escherichia coli Virulence Target *elt* Primers**

**Catalog No. NR-12201**

This reagent is the tangible property of the U.S. Government.

**Product Description:** NR-12201 contains forward and reverse primers that specifically amplify a region of the virulence target heat labile enterotoxin, *elt*, found on plasmid pJY11 of enterotoxigenic *Escherichia coli* (*E. coli*; ETEC). Note: *E. coli* 12-Target Multiplex PCR 10X Buffer (BEI Resources NR-13440) will be provided with your shipment of NR-12201.

**Lot: 58459946**

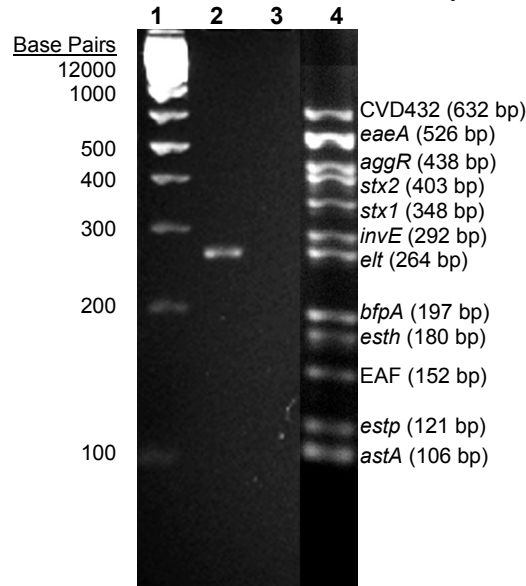
**Manufacturing Date: 29OCT2008**

TEST	SPECIFICATIONS	RESULTS
<b>PCR Amplification and Sequencing<sup>1,2</sup></b> Amplicon size NCBI blast of sequence	Expected size Expected sequence	~ 264 bp (Figure 1) <i>elt</i>
<b>Specificity</b>	Specific for <i>elt</i>	Specific for <i>elt</i>
<b>Concentration of Each Primer</b>	Report results	10 µM

<sup>1</sup>Genomic DNA from ETEC, strain H10407 (BEI Resources NR-2647) was used as template.

<sup>2</sup>The primers were designed at BEI Resources.

**Figure 1: PCR Amplification of Virulence Target *elt* using NR-12201 Primers and NR-2647 Template DNA**



Lane 1: Invitrogen™ 1Kb Plus DNA Ladder™  
 Lane 2: Amplicon (NR-12201 primers and NR-2647 template DNA)  
 Lane 3: Negative control (NR-12201 primers without NR-2647 template DNA)  
 Lane 4: Virulence Target Ladder (BEI Resources NR-12150)

## Certificate of Analysis for NR-12201

**Date:** 02 MAY 2012

**Signature:** 

**Title:** Technical Manager, BEI Authentication or designee

ATCC®, on behalf of BEI Resources, hereby represents and warrants that the material provided under this certificate has been subjected to the tests and procedures specified and that the results described, along with any other data provided in this certificate, are true and accurate to the best of ATCC®'s knowledge.

ATCC® is a trademark of the American Type Culture Collection.

You are authorized to use this product for research use only. It is not intended for human use.

