

**Escherichia coli Virulence Target *invE* Primers**

**Catalog No. NR-12200**

This reagent is the tangible property of the U.S. Government.

**Product Description:** NR-12200 contains forward and reverse primers that specifically amplify a region of the virulence target *invE* found on plasmid pINV of enteroinvasive *Escherichia coli* (*E. coli*; EIEC). Note: *E. coli* 12-Target Multiplex PCR 10X Buffer (BEI Resources NR-13440) will be provided with your shipment of NR-12200.

**Lot: 58459945**

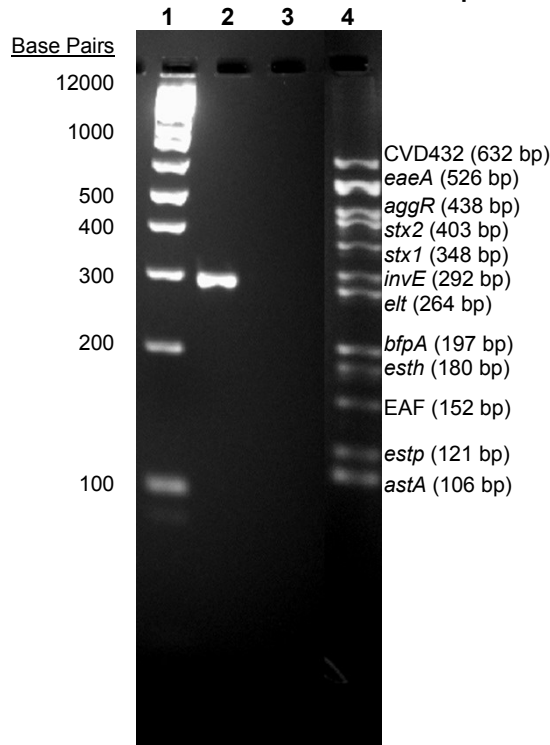
**Manufacturing Date: 29OCT2008**

TEST	SPECIFICATIONS	RESULTS
<b>PCR Amplification and Sequencing<sup>1,2</sup></b>		
Amplicon size	Expected size	~ 292 bp (Figure 1)
NCBI blast of sequence	Expected sequence	<i>invE</i>
<b>Specificity</b>	Specific for <i>invE</i>	Specific for <i>invE</i>
<b>Concentration of Each Primer</b>	Report results	10 µM

<sup>1</sup>Genomic DNA from EIEC, strain 1885-77 (EDL1282) (BEI Resources NR-3051) was used as template.

<sup>2</sup>The primers were designed at BEI Resources.

**Figure 1: PCR Amplification of Virulence Target *invE* using NR-12200 Primers and NR-3051 Template DNA**



Lane 1: Invitrogen™ 1Kb Plus DNA Ladder™  
 Lane 2: Amplicon (NR-12200 primers and NR-3051 template DNA)  
 Lane 3: Negative control (NR-12200 primers without NR-3051 template DNA)  
 Lane 4: Virulence Target Ladder (BEI Resources NR-12150)

## Certificate of Analysis for NR-12200

**Date:** 02 MAY 2012

**Signature:** 

**Title:** Technical Manager, BEI Authentication or designee

ATCC<sup>®</sup>, on behalf of BEI Resources, hereby represents and warrants that the material provided under this certificate has been subjected to the tests and procedures specified and that the results described, along with any other data provided in this certificate, are true and accurate to the best of ATCC<sup>®</sup>'s knowledge.

ATCC<sup>®</sup> is a trademark of the American Type Culture Collection.

You are authorized to use this product for research use only. It is not intended for human use.

