

Genomic DNA from *Parabacteroides distasonis*, Strain 31_2

Catalog No. HM-169D

Product Description: Genomic DNA was obtained from a preparation of *Parabacteroides distasonis*, strain 31_2 (deposited as *Porphyromonas* sp., however this organism has been reclassified since both the depositor's 16S ribosomal RNA gene sequence and the 16S ribosomal RNA gene sequence obtained from HM-169 align more favorably with *Parabacteroides distasonis*).

Lot^{1,2}: 59925935

Manufacturing Date: 13SEP2011

TEST	SPECIFICATIONS	RESULTS
Sequencing of 16S Ribosomal RNA Gene (~ 1390 base pairs)	≥ 99% identical to depositor's sequence Consistent with <i>P. distasonis</i>	≥ 99% identical to depositor's sequence Consistent with <i>P. distasonis</i>
Agarose Gel Electrophoresis	High molecular weight chromosomal DNA	High molecular weight chromosomal DNA (Figure 1)
Concentration by PicoGreen® Measurement	0.7 to 1.5 µg in 25 to 100 µL per vial	1.1 µg in 32 µL per vial (35 µg/mL)
Functional Activity by PCR Amplification 16S ribosomal RNA gene	~ 1500 bp amplicon	~ 1500 bp amplicon
OD₂₆₀/OD₂₈₀ Ratio	1.7 to 2.0	1.9
Bacterial Inactivation 10% of total yield plated on Tryptic Soy Agar with 5% defibrinated sheep blood ^{3,4}	No viable bacteria detected	No viable bacteria detected

¹Quality control of HMP organisms used for DNA extraction is only performed to demonstrate that the material produced by BEI Resources is identical to the deposited material. It should not be considered a complete characterization of the deposited organism.

²The bacterial preparation used for extraction of genomic DNA was produced by Modified Chopped Meat Medium (ATCC medium 1490) culture of the deposited material. After incubation for 24 hours at 37°C and anaerobic atmosphere (80% N₂:10% CO₂:10% H₂), genomic DNA was extracted using proprietary technology.

³7 days at 37°C and anaerobic atmosphere

⁴An extraction procedure was used that has been shown to consistently inactivate 100% of Gram-positive and Gram-negative bacteria.

Date: 07 JUN 2016

Signature:



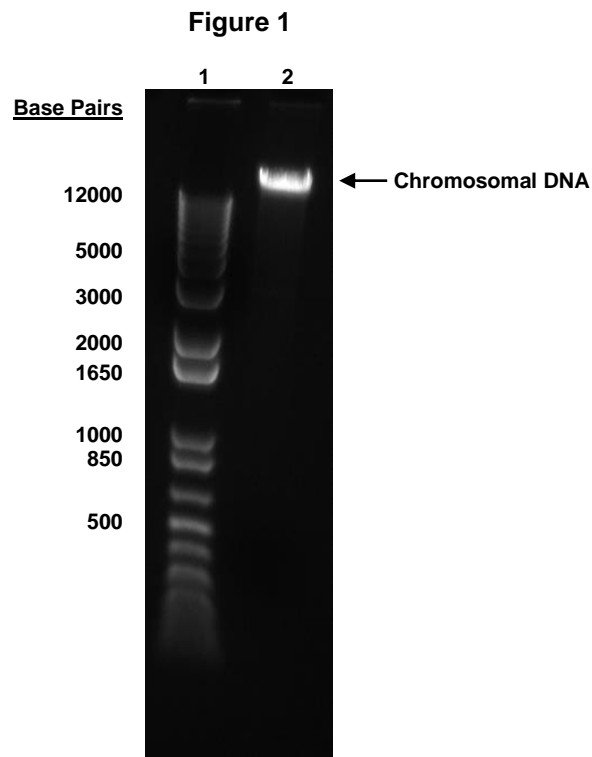
BEI Resources Authentication

ATCC®, on behalf of BEI Resources, hereby represents and warrants that the material provided under this certificate has been subjected to the tests and procedures specified and that the results described, along with any other data provided in this certificate, are true and accurate to the best of ATCC®'s knowledge.

ATCC® is a trademark of the American Type Culture Collection.

You are authorized to use this product for research use only. It is not intended for human use.





Lane 1: Invitrogen™ TrackIt 1 Kb Plus DNA Ladder™
Lane 2: 200 ng of HM-169D