

Genomic DNA from *Burkholderia mallei*, Strain China 5 (MM-A, NBL 4)

Catalog No. NR-2533

Product Description: Genomic DNA was isolated from a preparation of *Burkholderia mallei* (*B. mallei*), strain China 5 (MM-A, NBL 4).

Lot¹: 4741220

Manufacturing Date: OCT2005

TEST	SPECIFICATIONS	RESULTS
Sequencing of 16S Ribosomal RNA Gene (~ 1480 bp)	Identical to BEI Resources NR-21 Identical to GenBank AY305757 (ATCC [®] 10399 [™]) Consistent with <i>B. mallei</i>	Identical to BEI Resources NR-21 Identical to GenBank AY305757 (ATCC [®] 10399 [™]) Consistent with <i>B. mallei</i> ²
Agarose Gel Electrophoresis	High molecular weight chromosomal DNA	High molecular weight chromosomal DNA (Figure 1)
Functional Activity by PCR Amplification 16S ribosomal RNA gene	~ 1480 bp amplicon	~ 1480 bp amplicon
OD₂₆₀/OD₂₈₀ Ratio	Report results	2.05
Bacterial Inactivation 10% of total yield plated on agar; limit of detection is 0.02 colony-forming units per vial	No viable bacteria detected	No viable bacteria detected

¹The bacterial preparation used for extraction of genomic DNA was produced from ATCC[®] 10399[™]. Genomic DNA was extracted using proprietary technology.

²Also consistent with other *Burkholderia* species

Date: 23 MAY 2012

Signature:

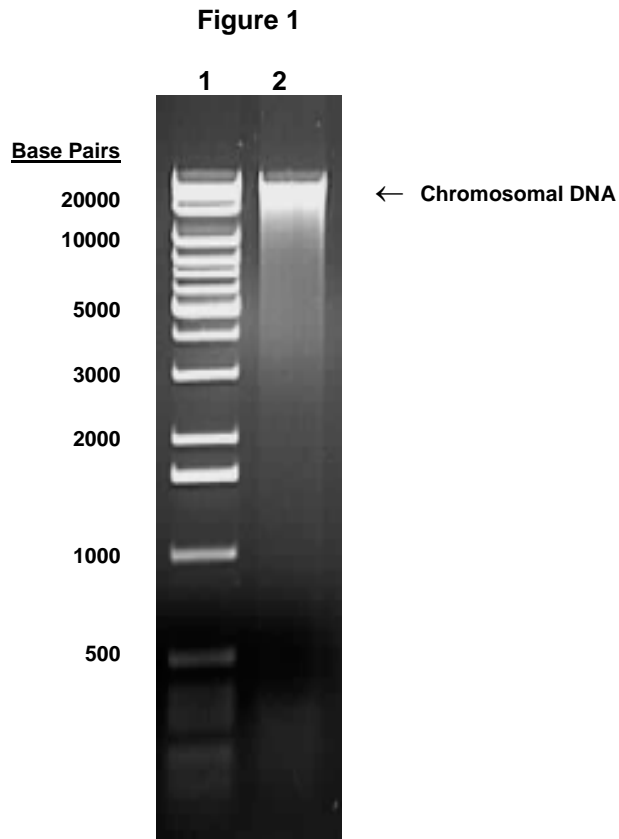


Title: Technical Manager, BEI Authentication or designee

ATCC[®], on behalf of BEI Resources, hereby represents and warrants that the material provided under this certificate has been subjected by the vendor to the tests and procedures specified and that the results described, along with any other data provided in this certificate, are true and accurate to the best of ATCC[®]'s knowledge.

ATCC[®] is a trademark of the American Type Culture Collection.

You are authorized to use this product for research use only. It is not intended for human use.



Lane 1: Invitrogen™ 1 Kb DNA Extension Ladder
Lane 2: 100 ng of NR-2533