

## Genomic DNA from *Burkholderia mallei*, Strain Ivan (NCTC 10230)

**Catalog No. NR-2534**

**Product Description:** Genomic DNA was isolated from a preparation of *Burkholderia mallei* (*B. mallei*), strain Ivan (NCTC 10230).

**Lot<sup>1</sup>: 4741221**

**Manufacturing Date: NOV2005**

TEST	SPECIFICATIONS	RESULTS
<b>Sequencing of 16S Ribosomal RNA Gene (~ 1480 bp)</b>	Identical to BEI Resources NR-22 Identical to GenBank AY305760 (ATCC <sup>®</sup> 15310 <sup>™</sup> ) Consistent with <i>B. mallei</i>	Identical to BEI Resources NR-22 Identical to GenBank AY305760 (ATCC <sup>®</sup> 15310 <sup>™</sup> ) Consistent with <i>B. mallei</i> <sup>2</sup>
<b>Agarose Gel Electrophoresis</b>	High molecular weight chromosomal DNA	High molecular weight chromosomal DNA (Figure 1)
<b>Functional Activity by PCR Amplification</b> 16S ribosomal RNA gene	~ 1480 bp amplicon	~ 1480 bp amplicon
<b>OD<sub>260</sub>/OD<sub>280</sub> Ratio</b>	Report results	2.00
<b>Bacterial Inactivation</b> 10% of total yield plated on agar; limit of detection is 0.02 colony-forming units per vial	No viable bacteria detected	No viable bacteria detected

<sup>1</sup>The bacterial preparation used for extraction of genomic DNA was produced from ATCC<sup>®</sup> 15310<sup>™</sup>. Genomic DNA was extracted using proprietary technology.

<sup>2</sup>Also consistent with other *Burkholderia* species

**Date:** 23 MAY 2012

**Signature:**



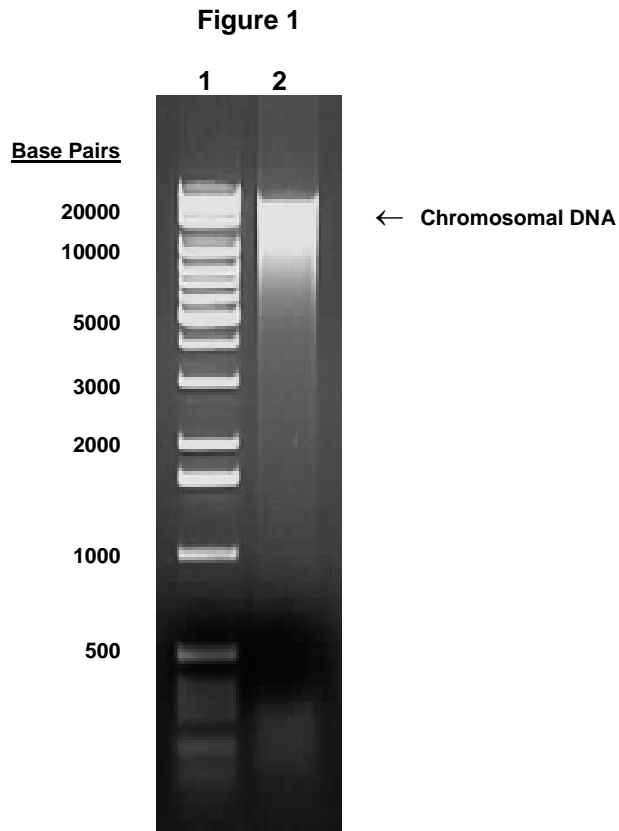
**Title:**

Technical Manager, BEI Authentication or designee

ATCC<sup>®</sup>, on behalf of BEI Resources, hereby represents and warrants that the material provided under this certificate has been subjected by the vendor to the tests and procedures specified and that the results described, along with any other data provided in this certificate, are true and accurate to the best of ATCC<sup>®</sup>'s knowledge.

ATCC<sup>®</sup> is a trademark of the American Type Culture Collection.

You are authorized to use this product for research use only. It is not intended for human use.



Lane 1: Invitrogen™ 1 Kb DNA Extension Ladder  
Lane 2: 100 ng of NR-2534