

Genomic DNA from *Burkholderia mallei*, Strain China 7 (NBL 7)

Catalog No. NR-9318

Product Description: Genomic DNA was isolated from a preparation of *Burkholderia mallei* (*B. mallei*), strain China 7 derived from ATCC® 23344 via several passages by different individuals prior to deposit at BEI Resources.

Lot¹: 57960658

Manufacturing Date: 04DEC2007

TEST	SPECIFICATIONS	RESULTS
Sequencing of 16S Ribosomal RNA Gene (~ 1380 bp)	Identical to BEI Resources NR-4071 Identical to GenBank CP000010 and CP000011 Consistent with <i>B. mallei</i>	Identical to BEI Resources NR-4071 Identical to GenBank CP000010 and CP000011 Consistent with <i>B. mallei</i> ²
Agarose Gel Electrophoresis	High molecular weight chromosomal DNA	High molecular weight chromosomal DNA (Figure 1)
Concentration by PicoGreen® Measurement	4 to 6 µg in 25 to 100 µL per vial	6.0 µg in 61 µL per vial (98 µg/mL)
Functional Activity by PCR Amplification 16S ribosomal RNA gene	~ 1500 bp amplicon	~ 1500 bp amplicon
OD ₂₆₀ /OD ₂₈₀ Ratio	1.7 to 1.9	1.7
Bacterial Inactivation 10% of total yield plated on agar ³	No viable bacteria detected	No viable bacteria detected

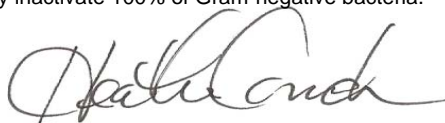
¹*B. mallei*, strain China 7 (ATCC® 23344™) that was passaged several times by different individuals prior to deposition was deposited by Dr. Herbert P. Schweizer of the Department of Microbiology, Immunology and Pathology, College of Veterinary Medicine and Biomedical Sciences, Colorado State University, Fort Collins, Colorado. The bacterial preparation used for extraction of genomic DNA was produced from the deposited material. Genomic DNA was extracted using proprietary technology.

²Also consistent with other *Burkholderia* species

³An extraction procedure was used that has been shown to consistently inactivate 100% of Gram-negative bacteria.

Date: 23 MAY 2012

Signature:



Title:

Technical Manager, BEI Authentication or designee

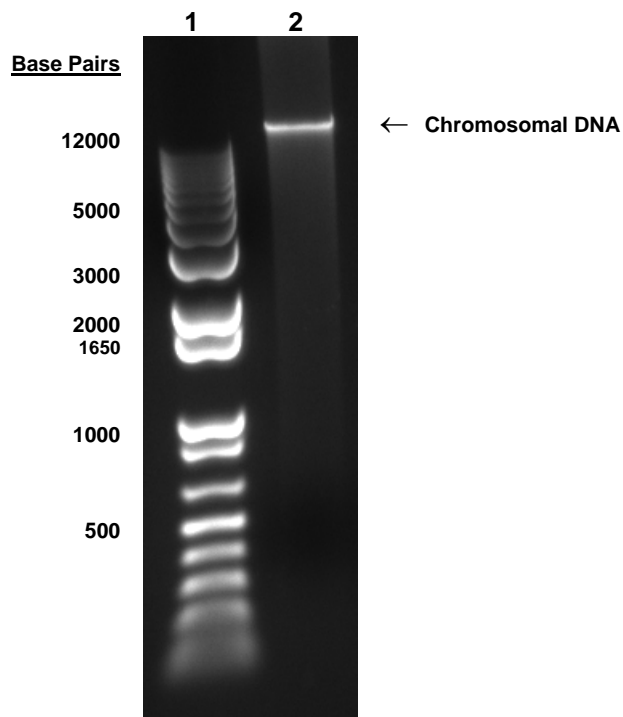
ATCC®, on behalf of BEI Resources, hereby represents and warrants that the material provided under this certificate has been subjected to the tests and procedures specified and that the results described, along with any other data provided in this certificate, are true and accurate to the best of ATCC®'s knowledge.

ATCC® is a trademark of the American Type Culture Collection.

You are authorized to use this product for research use only. It is not intended for human use.



Figure 1



Lane 1: Invitrogen™ TrackIt™ 1 Kb Plus DNA Ladder
Lane 2: 200 ng of NR-9318