

**Intimin Alpha C-Terminal Extracellular Domain from *Escherichia coli* O127:H6 with N-Terminal Histidine Tag, Expressed in *Escherichia coli***

**Catalog No. NR-12193**

This reagent is the tangible property of the U.S. Government.

**Product Description:** NR-12193 is a recombinant form of the C-terminal extracellular domain of the *Escherichia coli* (*E. coli*) O127:H6 outer membrane protein intimin alpha. The recombinant protein was expressed in *E. coli* and purified by nickel affinity chromatography.

**Lot: 58408292**

**Manufacturing Date: 02APR2012**

TEST	SPECIFICATIONS	RESULTS
Appearance	Clear and colorless	Clear and colorless
SDS-PAGE (SYPRO Orange Densitometer Scan)	Protein band of interest represents > 95% of total staining intensity above background	Protein band of interest represents > 98% of total staining intensity above background (Figure 1)
SELDI-TOF Mass Spectrometry	Measured mass is within 5% of expected mass (42717 Da) based on amino acid sequence)	Measured mass (41027 Da) is within 4.1% of expected mass based on amino acid sequence
SELDI-TOF Mass Spectrometry of Protease Digested Protein	> 50% of total residues accounted for in peptides of expected mass	64% of total residues accounted for in peptides of expected mass
Concentration by Bicinchoninic Acid Protein Assay	Report results	0.5 mg/mL
Functional Activity by Western Blot <sup>1</sup> (Figure 2) Recombinant intimin alpha C-terminal extracellular domain (NR-12193) Carbonic anhydrase	Reactive Nonreactive	Reactive Nonreactive
Endotoxin Content (Limulus Amoebocyte Lysate Assay)	< 10000 EU per mg	< 500 EU per mg
Sterility	Filter-sterilized	Filter-sterilized
UV Absorbance Ratio (A <sub>280</sub> /A <sub>260</sub> )	Report results	2.23

<sup>1</sup>Using rabbit polyclonal antibody to intimin gamma (BEI Resources NR-12194). Note: Antiserum developed against intimin gamma subtype also reacts with intimin alpha.

**Date:** 17 DEC 2014

**Signature:**



**Title:**

Technical Manager, BEI Authentication or designee

ATCC®, on behalf of BEI Resources, hereby represents and warrants that the material provided under this certificate has been subjected by the contractor to the tests and procedures specified and that the results described, along with any other data provided in this certificate, are true and accurate to the best of ATCC®'s knowledge.

ATCC® is a trademark of the American Type Culture Collection.

You are authorized to use this product for research use only. It is not intended for human use.



Figure 1 — SDS-PAGE

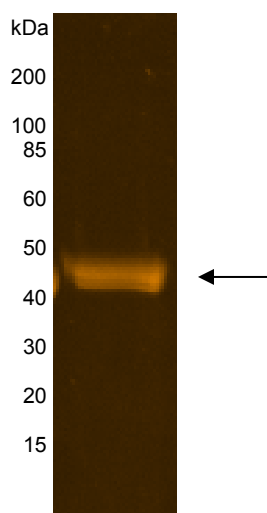
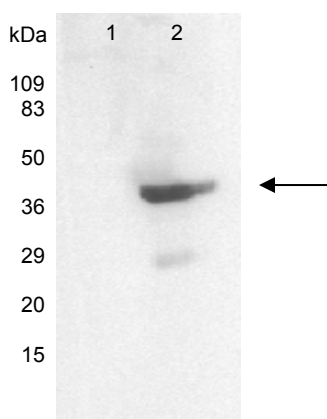


Figure 2 — Western Blot



Lane 1: Carbonic anhydrase (negative control)  
Lane 2: NR-12193