

**Collinsella sp., Strain 4\_8\_47FAA**

**Catalog No. HM-304**

**Product Description:** *Collinsella* sp., strain 4\_8\_47FAA was isolated from inflamed biopsy tissue taken from the sigmoid colon of a 25-year-old female patient with Crohn's disease.

**Lot<sup>1,2</sup>: 60318289**

**Manufacturing Date: 19OCT2011**

TEST	SPECIFICATIONS	RESULTS
<b>Phenotypic Analysis</b> Cellular morphology Colony morphology <sup>3</sup>	Report results Report results	Gram-positive rod Circular, low convex, entire and translucent (Figure 1)
<b>Genotypic Analysis</b> Sequencing of 16S ribosomal RNA gene (~ 1400 base pairs) <sup>4</sup>	≥ 99% identical to GenBank ( <i>Collinsella</i> sp. strain 4_8_47FAA) Consistent with <i>Collinsella</i> spp.	<b>Pending</b> Consistent with <i>Collinsella</i> spp.
<b>Viability (post-freeze)<sup>3</sup></b>	Growth	Growth

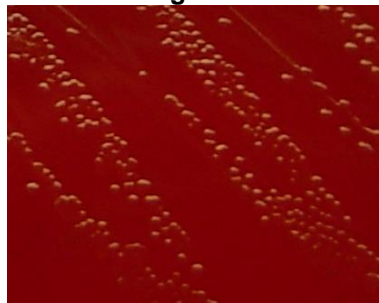
<sup>1</sup>Quality control of HMP material is only performed to demonstrate that the material distributed by BEI Resources is identical to the deposited material. It should not be considered a complete characterization of the deposited organism.

<sup>2</sup>*Collinsella* sp., strain 4\_8\_47FAA was deposited by Professor Emma Allen-Vercoe, Department of Molecular and Cellular Biology, University of Guelph, Guelph, Ontario, Canada. The deposited material was inoculated into Modified Chopped Meat Medium ([ATCC medium 1490](#)) and incubated for 48 hours at 37°C and anaerobic atmosphere (80% N<sub>2</sub>:10% CO<sub>2</sub>:10% H<sub>2</sub>). The material from the initial growth was passaged twice in Modified Chopped Meat Medium at 37°C and anaerobic atmosphere to produce this lot.

<sup>3</sup>72 hours at 37°C in an anaerobic atmosphere on Tryptic Soy Agar with 5% sheep blood

<sup>4</sup>The sequence obtained for HM-304 could only be compared with published sequences. No 16S sequence was provided by the depositor.

**Figure 1**



**Date:** 18 SEP 2012

**Signature:**

**Title:**

Technical Manager, BEI Authentication or designee

ATCC®, on behalf of BEI Resources, hereby represents and warrants that the material provided under this certificate has been subjected to the tests and procedures specified and that the results described, along with any other data provided in this certificate, are true and accurate to the best of ATCC®'s knowledge.

ATCC® is a trademark of the American Type Culture Collection.

You are authorized to use this product for research use only. It is not intended for human use.

