

Polyclonal Anti-*Mycobacterium tuberculosis* Antigen 85 Complex (FbpA/FbpB/FbpC; Genes Rv3804c, Rv1886c, Rv0129c) (antiserum, Rabbit)**Catalog No. NR-13800**

This reagent is the tangible property of the U.S. Government.

Product Description:

Antibody Designation: α -Ag85

Polyclonal antiserum to the Antigen 85 complex (FbpA/FbpB/FbpC) of *Mycobacterium tuberculosis*, strain H37Rv was produced in rabbits. The antiserum is reported to be active in ELISA and Western Blot assays.

Lot: 60984654**Manufacturing Date: 19MAR2012**

QC testing was performed by Colorado State University under the TB Vaccine Testing and Research Materials Contract (NIH). The Colorado State University documentation for lot 12.Ag85.3.19.32.rp is attached.

ATCC®, on behalf of BEI Resources, hereby represents and warrants that the material provided under this certificate has been subjected by the contractor to the tests and procedures specified and that the results described, along with any other data provided in this certificate, are true and accurate to the best of ATCC®'s knowledge.

ATCC® is a trademark of the American Type Culture Collection.

You are authorized to use this product for research use only. It is not intended for human use.



TB Contract Antibody QC Sheet

General Information:

Product: Rabbit Polyclonal Antibody against Antigen 85 Complex (Rv1886c, Rv0129c, Rv3804c)
Lot Number: 12.Ag85.3.19.32.rp
Species: *Mycobacterium tuberculosis*
Strain: H37Rv
Type: Rabbit Serum

Production Information:

Cell Line: _____ SOP#: _____ Notebook/pp: _____
Amount of CS Harvested: _____ Clarity: clear
IgG Purification: _____ SOP#: _____ Notebook/pp: _____

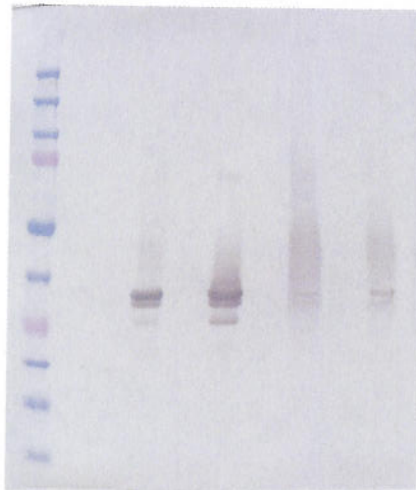
QC Information:

Tested Against: Subcellular Fractions SOP#: AB102
Notebook/pp: Keri Wright, Antibody Notebook, pgs 45-46, 57-58, 71, 81-82, 89
Titer: 1:10,000 Western blot: X ELISA: _____

Special Instructions:

QC Western blot:

1. Protein Standard
2. CYT
3. CFP
4. MEM
5. CW



Aliquot Information: 1 x 176 mL

* Aliquot information reflects aliquots made at the time of QC. Bulk aliquots will be broken down as needed.

Keri Wright 8/20/12
Research Associate / Date

[Signature] 8/22/12
Lab Supervisor / Date