

**Polyclonal Anti-*Mycobacterium tuberculosis* HRP1 (Gene Rv2626c) (antiserum, Rabbit)****Catalog No. NR-36512**

This reagent is the tangible property of the U.S. Government.

**Product Description:**

Antibody Designation:  $\alpha$ -HRP1

Polyclonal antiserum to a hypoxic response protein 1 (HRP1, also referred to as 15 kDa conserved hypothetical protein, Gene Rv2626c) of *Mycobacterium tuberculosis*, strain H37Rv was produced in rabbits. The antiserum is reported to be active in ELISA and Western Blot assays.

**Lot: 61131532****Manufacturing Date: 31JUL2012**

QC testing was performed by Colorado State University under the TB Vaccine Testing and Research Materials Contract (NIH). The Colorado State University documentation for lot 11.2626c.11.15.15.rp is attached.

ATCC<sup>®</sup>, on behalf of BEI Resources, hereby represents and warrants that the material provided under this certificate has been subjected by the contractor to the tests and procedures specified and that the results described, along with any other data provided in this certificate, are true and accurate to the best of ATCC<sup>®</sup>'s knowledge.

ATCC<sup>®</sup> is a trademark of the American Type Culture Collection.

You are authorized to use this product for research use only. It is not intended for human use.



## TB Contract Antibody QC Sheet

### General Information:

Product: anti-2626c Rabbit Polyclonal Antibody (Rv2626c)  
Lot Number: 11.2626c.11.15.15.rp  
Species: *Mycobacterium tuberculosis*  
Strain: H37Rv  
Type: Rabbit Serum

### Production Information:

Cell Line: N/A                      SOP#: Notebook/pp: N/A  
Amount of CS Harvested: N/A                      Clarity: clear  
IgG Purification: N/A                      SOP#: N/A Notebook/pp: N/A

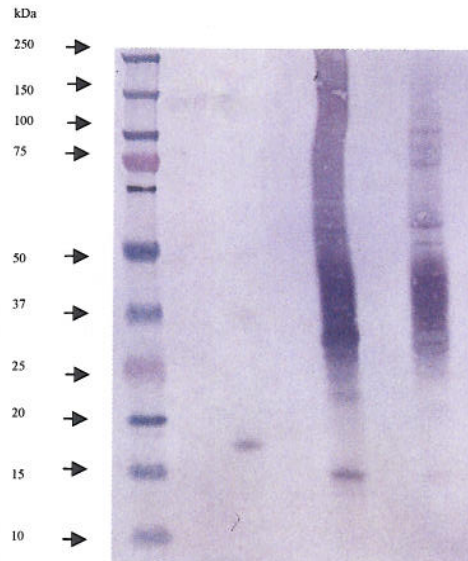
### QC Information:

Tested Against: 2626c, CW, CFP  
SOP#: AB102 Notebook/pp: CA/KW NB#1 pAb pp. 15-17, 21-22, 27-29, 37-41, 93-97  
&CA/KW NB#3 pAb pp.43-44, 49-60, 68-71  
Titer: 1:5,000                      Western blot: X                      ELISA: \_\_\_\_\_

**Special Instructions:** 2ng of recombinant 2626c and 5ug of SCFs loaded into well.

### QC Western blot:

1. Protein Standard
2. 2626c
3. CW
4. CFP



**Aliquot Information:** 100 aliquots @ 250uL, 1 aliquot @ 145 mL

Davis Akem 3/1/12  
Research Associate / Date

[Signature] 8/1/2012  
Lab Supervisor / Date