

Oribacterium sinus, Strain F0268

Catalog No. HM-13

Product Description: *Oribacterium sinus* (*O. sinus*), strain F0268 was isolated in June 1980 from the subgingival plaque of a 27-year-old white female patient with severe periodontitis in the United States.

Lot^{1,2}: 60944641

Manufacturing Date: 23MAY2012

TEST	SPECIFICATIONS	RESULTS
Phenotypic Analysis Cellular morphology ³ Colony morphology ⁴	Report results Report results	Gram-positive rods Circular, entire and translucent (Figure 1)
Genotypic Analysis Sequencing of 16S ribosomal RNA gene (~ 1350 base pairs)	≥ 99% identical to GenBank: ACKX01000142 (<i>O. sinus</i> , strain F0268)	≥ 99% identical to GenBank: ACKX01000142 (<i>O. sinus</i> , strain F0268)
Viability (post-freeze)⁴	Growth	Growth

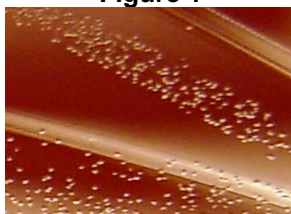
¹Quality control of HMP material is only performed to demonstrate that the material distributed by BEI Resources is identical to the deposited material. It should not be considered a complete characterization of the deposited organism.

²*O. sinus*, strain F0268 was deposited by Jacques Izard, Assistant Member of the Staff, Department of Molecular Genetics, The Forsyth Institute, Boston, Massachusetts. The deposited material was inoculated into Wilkins-Chalgren anaerobe broth and incubated for 72 hours at 37°C and anaerobic atmosphere (80% N₂:10% CO₂:10% H₂). The material from the initial growth was passaged once in Wilkins-Chalgren anaerobe broth for 48 hours at 37°C and anaerobic atmosphere to produce this lot.

³*O. sinus* is a Gram-positive organism but the cells decolor easily and a Gram negative phenotype may be observed [Carlier, J.-P., et al. "*Oribacterium sinus* gen. nov., sp. nov., within the Family 'Lachnospiraceae' (Phylum Firmicutes)." *Int. J. Syst. Evol. Microbiol.* 54 (2004): 1611-1615. PubMed: 15388717].

⁴48 hours at 37°C and anaerobic atmosphere on Wilkins-Chalgren anaerobe agar with 5% defibrinated sheep blood

Figure 1



Date: 09 NOV 2012

Signature:

Title:

Technical Manager, BEI Authentication or designee

ATCC®, on behalf of BEI Resources, hereby represents and warrants that the material provided under this certificate has been subjected to the tests and procedures specified and that the results described, along with any other data provided in this certificate, are true and accurate to the best of ATCC®'s knowledge.

ATCC® is a trademark of the American Type Culture Collection.

You are authorized to use this product for research use only. It is not intended for human use.

