

Parvimonas sp., Oral Taxon 393, Strain F0440

Catalog No. HM-563

Product Description: *Parvimonas* sp., Oral Taxon 393, strain F0440 is a human oral isolate from the United Kingdom.

Lot^{1,2}: 60944651

Manufacturing Date: 20JUN2012

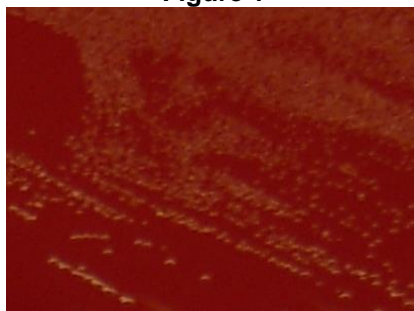
TEST	SPECIFICATIONS	RESULTS
Phenotypic Analysis Cellular morphology Colony morphology ³	Report results Report results	Gram-positive cocci Circular, convex, entire, translucent and glistening (Figure 1)
Genotypic Analysis Sequencing of 16S ribosomal RNA gene (~ 1470 base pairs)	≥ 99% identical to GenBank: AFUS01000003 (<i>Parvimonas</i> sp., Oral Taxon 393, strain F0440)	≥ 99% identical to GenBank: AFUS01000003 (<i>Parvimonas</i> sp., Oral Taxon 393, strain F0440)
Viability (post-freeze)³	Growth	Growth

¹Quality control of HMP material is only performed to demonstrate that the material distributed by BEI Resources is identical to the deposited material. It should not be considered a complete characterization of the deposited organism.

²*Parvimonas* sp., Oral Taxon 393, strain F0440 was deposited by Jacques Izard, Assistant Member of the Staff, Department of Molecular Genetics, The Forsyth Institute, Boston, Massachusetts, USA. The deposited material was inoculated into Chopped Meat Carbohydrate Medium with 0.1% cellobiose, 0.1% maltose, 0.1% starch and 0.1% Tween 80 (ATCC medium 1102) and incubated for 5 days at 37°C in an anaerobic atmosphere. The material from the initial growth was passaged twice in Chopped Meat Carbohydrate Medium with 0.1% cellobiose, 0.1% maltose, 0.1% starch and 0.1% Tween 80 for 5-6 days at 37°C in an anaerobic atmosphere to produce this lot.

³5 days at 37°C in an anaerobic atmosphere on Tryptic Soy agar with 5% defibrinated sheep blood

Figure 1



Date: 06 NOV 2012

Signature:

Title: Technical Manager, BEI Authentication or designee

ATCC®, on behalf of BEI Resources, hereby represents and warrants that the material provided under this certificate has been subjected to the tests and procedures specified and that the results described, along with any other data provided in this certificate, are true and accurate to the best of ATCC®'s knowledge.

ATCC® is a trademark of the American Type Culture Collection. You are authorized to use this product for research use only. It is not intended for human use.

