

Certificate of Analysis for HM-635

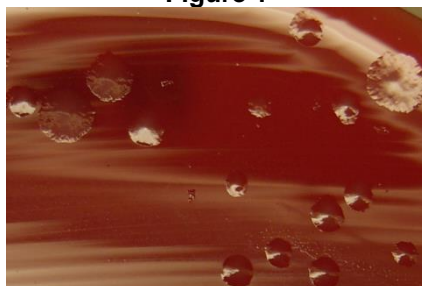
Clostridium* sp., Strain M62/1*Catalog No. HM-635****Product Description:** *Clostridium* sp., strain M62/1 was obtained in 2002 from the fecal sample of a healthy adult in Aberdeen, Scotland, United Kingdom.**Lot^{1,2}: 61144944****Manufacturing Date: 01AUG2012**

TEST	SPECIFICATIONS	RESULTS
Phenotypic Analysis Cellular morphology Colony morphology ³	Report results Report results	Gram-positive rod Irregular, flat and dull (Figure 1)
Genotypic Analysis Sequencing of 16S ribosomal RNA gene (~ 1430 base pairs)	≥ 99% identical to GenBank: ACFX02000046 (<i>Clostridium</i> sp., strain M62/1)	≥ 99% identical to GenBank: ACFX02000046 (<i>Clostridium</i> sp., strain M62/1)
Viability (post-freeze)³	Growth	Growth

¹Quality control of HMP material is only performed to demonstrate that the material distributed by BEI Resources is identical to the deposited material. It should not be considered a complete characterization of the deposited organism.

²*Clostridium* sp., strain M62/1 was deposited by Harry J. Flint and Sylvia H. Duncan, Department of Gut Health, Rowett Institute of Nutrition and Health, University of Aberdeen, Bucksburn, Aberdeen, Scotland, UK. The deposited material was inoculated into Modified Reinforced Clostridial Broth (ATCC medium 2107) and incubated for 48 hours at 37°C and anaerobic atmosphere (80% N₂:10% CO₂:10% H₂). The material from the initial growth was passaged twice in Modified Reinforced Clostridial Broth for 48 hours at 37°C and anaerobic atmosphere to produce this lot.

³48 hours at 37°C and anaerobic atmosphere on Tryptic Soy Agar with 5% defibrinated sheep blood

Figure 1**Date:** 06 NOV 2012**Signature:****Title:**

Technical Manager, BEI Authentication or designee

ATCC®, on behalf of BEI Resources, hereby represents and warrants that the material provided under this certificate has been subjected to the tests and procedures specified and that the results described, along with any other data provided in this certificate, are true and accurate to the best of ATCC®'s knowledge.

ATCC® is a trademark of the American Type Culture Collection.

You are authorized to use this product for research use only. It is not intended for human use.

