

## Certificate of Analysis for HM-90

**Actinomyces sp., Oral Taxon 848, Strain F0332****Catalog No. HM-90**

**Product Description:** *Actinomyces* sp., Oral Taxon 848, strain F0332 was isolated in June 1983 from the subgingival plaque of a 51-year-old, white male patient with moderate periodontitis in the United States.

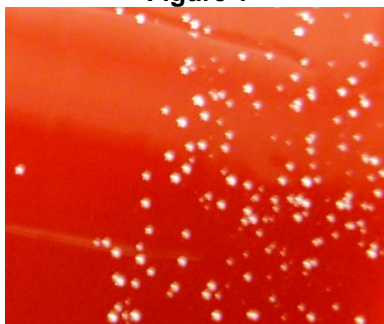
**Lot<sup>1,2</sup>: 61116486****Manufacturing Date: 07AUG2012**

TEST	SPECIFICATIONS	RESULTS
<b>Phenotypic Analysis</b> Cellular morphology Colony morphology <sup>3</sup>	Report results Report results	Gram-positive rods Pinpoint (Figure 1)
<b>Genotypic Analysis</b> Sequencing of 16S ribosomal RNA gene (~ 1410 base pairs)	≥ 99% identical to GenBank ACUY02000007 ( <i>Actinomyces</i> sp. Oral Taxon 848, strain F0332)	≥ 99% identical to GenBank ACUY02000007 ( <i>Actinomyces</i> sp. Oral Taxon 848, strain F0332)
<b>Viability (post-freeze)<sup>6</sup></b>	Growth	Growth

<sup>1</sup>Quality control of HMP material is only performed to demonstrate that the material distributed by BEI Resources is identical to the deposited material. It should not be considered a complete characterization of the deposited organism.

<sup>2</sup>*Actinomyces* sp., Oral Taxon 848, strain F0332 was deposited by Jacques Izard, Department of Molecular Genetics, The Forsyth Institute, Boston, Massachusetts. The deposited material was inoculated into Actinomyces Broth (ATCC medium 7) and incubated for 48 hours at 37°C and anaerobic atmosphere (80% N<sub>2</sub>:10% CO<sub>2</sub>:10% H<sub>2</sub>). The material from the initial growth was passaged once in Actinomyces Broth for 96 hours at 37°C and anaerobic atmosphere (80% N<sub>2</sub>:10% CO<sub>2</sub>:10% H<sub>2</sub>) to produce this lot.

<sup>3</sup>120 hours at 37°C and anaerobic atmosphere on Tryptic Soy Agar with 5% defibrinated sheep blood

**Figure 1****Date:** 03 DEC 2012**Signature:****Title:**

Technical Manager, BEI Authentication or designee

ATCC®, on behalf of BEI Resources, hereby represents and warrants that the material provided under this certificate has been subjected to the tests and procedures specified and that the results described, along with any other data provided in this certificate, are true and accurate to the best of ATCC®'s knowledge.

ATCC® is a trademark of the American Type Culture Collection.

You are authorized to use this product for research use only. It is not intended for human use.

