

Certificate of Analysis for NR-31666

***Vibrio parahaemolyticus*, Strain V05/010 (Serotype O3:K6)**

Catalog No. NR-31666

Product Description: *Vibrio parahaemolyticus* (*V. parahaemolyticus*), strain V05/010, serotype O3:K6 was isolated from a patient with clinical disease in Oslo, Norway in 1999.

Lot¹: 61303331

Manufacturing Date: 17OCT2012

TEST	SPECIFICATIONS	RESULTS
Phenotypic Analysis Cellular morphology Colony morphologies ^{2,3} Hemolysis Biochemical characterization: Analytical profile index (API [®] 20E)	Report results Report results Report Result Consistent with <i>V. parahaemolyticus</i>	Gram-negative rods Colony Type 1: Circular, entire, smooth and translucent (Figure 1) Colony Type 2: Circular, entire, smooth and grey (Figure 1) β-hemolytic Consistent with <i>V. parahaemolyticus</i>
Genotypic Analysis Sequencing of 16S ribosomal RNA gene (~ 920 base pairs) Riboprinter [®] Microbial Characterization System	Consistent with <i>V. parahaemolyticus</i> Consistent with <i>V. parahaemolyticus</i>	Consistent with <i>V. parahaemolyticus</i> ⁴ Consistent with <i>V. parahaemolyticus</i>
Viability (post-freeze)²	Growth	Growth

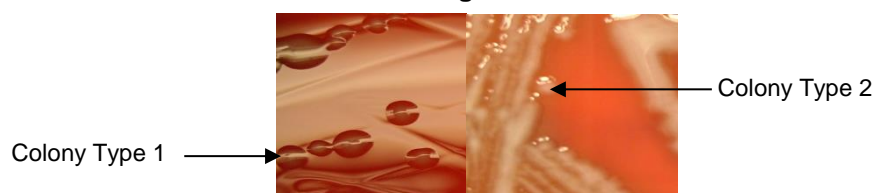
¹NR-31666 was produced by inoculation of deposited material into Tryptic Soy Broth and grown 24 hours in an aerobic atmosphere. Broth inoculum was added to Kolles which were grown 24 hours at 37°C and aerobic atmosphere to produce this lot.

²24 hours at 37°C and aerobic atmosphere on Tryptic Soy Agar

³Two colony types were observed. Plating of individual colony types showed that they did not revert to the mixed colony types. The 16S gene of each colony type was sequenced and determined to be 100% identical.

⁴Also consistent with other *Vibrio* species

Figure 1



Date: 19 DEC 2012

Signature:

Title: Technical Manager, BEI Authentication or designee

ATCC[®], on behalf of BEI Resources, hereby represents and warrants that the material provided under this certificate has been subjected to the tests and procedures specified and that the results described, along with any other data provided in this certificate, are true and accurate to the best of ATCC[®]'s knowledge.

ATCC[®] is a trademark of the American Type Culture Collection.

You are authorized to use this product for research use only. It is not intended for human use.



BEI Resources
www.beiresources.org

E-mail: contact@beiresources.org
 Tel: 800-359-7370
 Fax: 703-365-2898