

Certificate of Analysis for HM-7

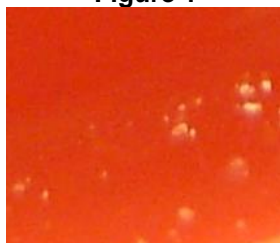
Lachnospiraceae* sp., Oral Taxon 107, Strain F0167*Catalog No. HM-7****Product Description:** *Lachnospiraceae* sp., Oral Taxon 107, strain F0167 was isolated in March 1988 from the subgingival plaque of a 14-year-old human male.**Lot^{1,2}: 59452450****Manufacturing Date: 13SEP2010**

TEST	SPECIFICATIONS	RESULTS
Phenotypic Analysis Cellular morphology Colony morphology ³ Aerobic growth	Report results Report results Report results	Gram-positive rod Pinpoint and slightly gray (Figure 1) No growth
Genotypic Analysis Sequencing of 16S ribosomal RNA gene (~ 1420 base pairs)	≥ 99% identical to GenBank: ADDS01000069 (<i>Lachnospiraceae</i> sp., Oral Taxon 107, strain F0167)	≥ 99% identical to GenBank: ADDS01000069 (<i>Lachnospiraceae</i> sp., Oral Taxon 107, strain F0167)
Viability (post-freeze)³	Growth	Growth

¹Quality control of HMP material is only performed to demonstrate that the material distributed by BEI Resources is identical to the deposited material. It should not be considered a complete characterization of the deposited organism.

²*Lachnospiraceae* sp., Oral Taxon 107, strain F0167 was deposited by Jacques Izard, Assistant Member of the Staff, Department of Molecular Genetics, The Forsyth Institute, Boston, Massachusetts. The deposited material was inoculated into Modified Reinforced Clostridial Broth and incubated for 48 hours at 37°C and anaerobic atmosphere (80% N₂:10% CO₂:10% H₂). The material from the initial growth was passaged once in Modified Reinforced Clostridial Broth for 72 hours at 37°C and anaerobic atmosphere to produce this lot.

³48 hours at 37°C and anaerobic atmosphere on Tryptic Soy Agar with 5% defibrinated sheep blood

Figure 1**Date:** 01 NOV 2012**Signature:****Title:**

Technical Manager, BEI Authentication or designee

ATCC®, on behalf of BEI Resources, hereby represents and warrants that the material provided under this certificate has been subjected to the tests and procedures specified and that the results described, along with any other data provided in this certificate, are true and accurate to the best of ATCC®'s knowledge.

ATCC® is a trademark of the American Type Culture Collection.

You are authorized to use this product for research use only. It is not intended for human use.

