

***Vibrio parahaemolyticus*, Strain V05/072 (Serotype O3:K6)**

Catalog No. NR-31673

Product Description: *Vibrio parahaemolyticus* (*V. parahaemolyticus*), strain V05/072, serotype O3:K6 was isolated from a mussel in Portugal.

Lot¹: 61234452

Manufacturing Date: 27SEP2012

TEST	SPECIFICATIONS	RESULTS
Phenotypic Analysis Cellular morphology Colony morphologies ^{2,3} Hemolysis Biochemical characterization: Analytical profile index (API [®] 20E)	Report results Report results Report results Consistent with <i>V. parahaemolyticus</i>	Gram-negative rods Colony Type 1: Circular, flat, rough and grey (Figure 1) Colony Type 2: Circular, low convex, entire, smooth and grey (Figure 1) No hemolysis Consistent with <i>V. parahaemolyticus</i>
Genotypic Analysis Sequencing of 16S ribosomal RNA gene (~ 1480 base pairs) Riboprinter [®] Microbial Characterization System	Consistent with <i>V. parahaemolyticus</i> Consistent with <i>V. parahaemolyticus</i>	Consistent with <i>V. parahaemolyticus</i> ^{4,5} Consistent with <i>V. parahaemolyticus</i>
Viability (post-freeze)²	Growth	Growth

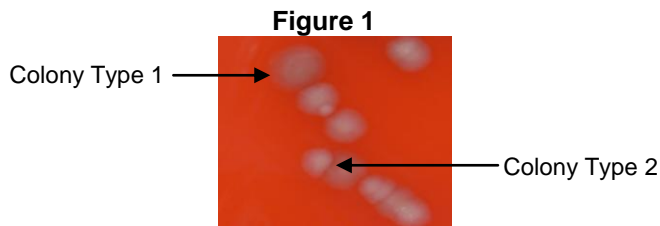
¹NR-31673 was produced by inoculation of deposited material into Tryptic Soy Broth and grown 24 hours in an aerobic atmosphere at 37°C. Broth inoculum was added to Kolles which were grown 24 hours at 37°C and aerobic atmosphere to produce this lot.

²24 hours at 37°C and aerobic atmosphere on Tryptic Soy Agar with 5% defibrinated sheep blood

³Two colony types were observed. Plating of individual colony types showed that they did not revert to the mixed colony types. The 16S gene of each colony type was sequenced and determined to be consistent with each other and *V. parahaemolyticus*.

⁴Also consistent with other *Vibrio* species

⁵Sequence used for genotypic analysis was obtained from each colony type after growth for 24 hours at 37°C in an aerobic atmosphere on Tryptic Soy Agar with 5% defibrinated sheep blood.



Date: 30 JAN 2013

Signature: 

Title: Technical Manager, BEI Authentication or designee

ATCC[®], on behalf of BEI Resources, hereby represents and warrants that the material provided under this certificate has been subjected to the tests and procedures specified and that the results described, along with any other data provided in this certificate, are true and accurate to the best of ATCC[®]'s knowledge.

ATCC[®] is a trademark of the American Type Culture Collection.

You are authorized to use this product for research use only. It is not intended for human use.

