

# Certificate of Analysis for NR-21995

***Vibrio parahaemolyticus*, Strain DI-E12 5/26 (Serotype O1:KUT)**

**Catalog No. NR-22195**

**Product Description:** *Vibrio parahaemolyticus* (*V. parahaemolyticus*), strain DI-E12 5/26 was isolated from an oyster in Alabama, USA.

**Lot<sup>1</sup>: 61188762**

**Manufacturing Date: 22AUG2012**

| TEST   | SPECIFICATIONS   | RESULTS  |
|--|--|--|
| <b>Phenotypic Analysis</b><br>Cellular morphology<br>Colony morphology <sup>2</sup><br><br>Hemolysis<br>Biochemical characterization:<br>Analytical profile index (API® 20E)<br>VITEK System 2 (GN Card) | Report results<br>Report results<br><br>Report results<br><br>Consistent with <i>V. parahaemolyticus</i><br>Consistent with <i>V. parahaemolyticus</i> | Gram-negative rods<br>Circular, umbonate, slightly undulate and smooth (Figure 1)<br>α-hemolysis<br><br>Consistent with <i>V. parahaemolyticus</i><br>Consistent with <i>V. parahaemolyticus</i> |
| <b>Genotypic Analysis</b><br>Sequencing of 16S ribosomal RNA gene (~ 1480 base pairs)  | Consistent with <i>V. parahaemolyticus</i>   | Consistent with <i>V. parahaemolyticus</i> <sup>3</sup>  |
| <b>Viability (post-freeze)<sup>2</sup></b>   | Growth   | Growth   |

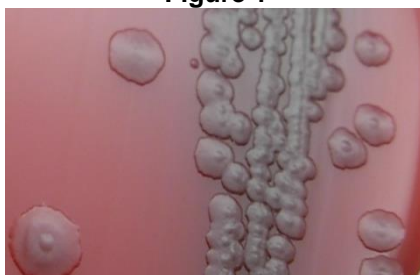
<sup>1</sup>NR-22195 was produced by inoculation of depositor material into Tryptic Soy Broth and incubated 24 hours in an aerobic atmosphere at 37°C.

Broth inoculum was added to Kolles which was grown 24 hours at 37°C and aerobic atmosphere to produce this lot.

<sup>2</sup>24 hours at 37°C and aerobic atmosphere on Tryptic Soy Agar with 5% defibrinated sheep blood

<sup>3</sup>Also consistent with other *Vibrio* species

**Figure 1**



**Date:** 28 FEB 2013

**Signature:**

**Title:**

Technical Manager, BEI Authentication or designee

ATCC®, on behalf of BEI Resources, hereby represents and warrants that the material provided under this certificate has been subjected to the tests and procedures specified and that the results described, along with any other data provided in this certificate, are true and accurate to the best of ATCC®'s knowledge.

ATCC® is a trademark of the American Type Culture Collection.

You are authorized to use this product for research use only. It is not intended for human use.

