

**Escherichia coli, Strain 5.0959**
**Catalog No. NR-17630**

**Product Description:** *Escherichia coli* (*E. coli*), strain 5.0959 was isolated from an unknown host; it has been typed as a non-O157, Shiga toxin-producing *E. coli* (STEC) strain.

**Lot<sup>1</sup>: 60798948**
**Manufacturing Date: 16MAR2012**

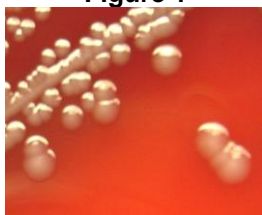
TEST	SPECIFICATIONS	RESULTS
<b>Phenotypic Analysis</b> Cellular morphology Colony morphology <sup>2</sup>  Analytical profile index (API <sup>®</sup> 20 E)	Report results Report results  Consistent with <i>E. coli</i>	Gram-negative rod Circular, low convex, entire translucent and cream (Figure 1) Consistent with <i>E. coli</i>
<b>Genotypic Analysis of Extracted Nucleic Acid</b> Sequencing of 16S ribosomal RNA gene (~ 1430 base pairs) PCR amplification of plasmid borne virulence markers <sup>4</sup> <i>elt</i> (pJY11) <i>esth</i> and/or <i>estp</i> (pCS1) EAF (pEAF) <i>bfpA</i> (pEAF) <i>invE</i> (pINV) CVD432 (pAA) <i>aggR</i> (pAA) PCR amplification of chromosomal borne virulence markers <sup>4</sup> <i>astA</i> <i>eaeA</i> <i>stx1</i> <i>stx2</i>	Consistent with <i>E. coli</i>  Report results Report results Report results Report results Report results Report results Report results  Report results Report results Report results Report results	Consistent with <i>E. coli</i> <sup>3</sup>  Negative Negative Negative Negative Negative Negative Negative  Negative Positive Negative Positive
<b>Viability (post-freeze)<sup>2</sup></b>	Growth	Growth

<sup>1</sup>*E. coli*, strain 5.0959 was deposited by C. DebRoy, Director, *E. coli* Reference Center, Department of Veterinary and Biomedical Sciences, College of Agricultural Sciences, The Pennsylvania State University, University Park, Pennsylvania. NR-17630 was produced by inoculation of the deposited material into Tryptic Soy Broth and grown 24 hours at 37°C and aerobic atmosphere. Broth inoculum was added to kolles which were grown 24 hours at 37°C and aerobic atmosphere to produce this lot.

<sup>2</sup>24 hours at 37°C and aerobic atmosphere on Tryptic Soy Agar with 5% defibrinated sheep blood

<sup>3</sup>Also consistent with *Shigella* species

<sup>4</sup>Performed using the Diarrheagenic *E. coli* 12-Target Multiplex PCR for Virulence Typing Assay (BEI Resources NR-13439); the primers for CVD432, *aggR*, *bfpA*, *esth*, EAF and *astA* are described in Kimata, K., et al. "Rapid Categorization of Pathogenic *Escherichia coli* by Multiplex PCR." *Microbiol. Immunol.* 49 (2005): 485-492. PubMed: 15965295.

**Figure 1**


**Certificate of Analysis for NR-17630****Date:** 09 MAY 2013**Signature:****Title:** Technical Manager, BEI Authentication or designee

ATCC®, on behalf of BEI Resources, hereby represents and warrants that the material provided under this certificate has been subjected to the tests and procedures specified and that the results described, along with any other data provided in this certificate, are true and accurate to the best of ATCC®'s knowledge.

ATCC® is a trademark of the American Type Culture Collection.

You are authorized to use this product for research use only. It is not intended for human use.

