

Genomic DNA from *Escherichia coli*, Strain 87-1713

Catalog No. NR-19884

Product Description: Genomic DNA was isolated from a preparation of *Escherichia coli* (*E. coli*), strain 87-1713, serotype O145:H6. Enterohemorrhagic *E. coli* (EHEC) strain 87-1713 is a human isolate from Canada, 1987. **Note: The label refers to this item as strain 87-1713 (10i). The (10i) is a lab designation that was used for tracking and is not part of the strain name.**

Lot¹: 59415660

Manufacturing Date: 04OCT2010

TEST	SPECIFICATIONS	RESULTS
Sequencing of 16S Ribosomal RNA Gene (~ 1470 base pairs)	Consistent with <i>E. coli</i>	Consistent with <i>E. coli</i> ²
Agarose Gel Electrophoresis	High molecular weight chromosomal DNA	High molecular weight chromosomal DNA (Figure 1)
Concentration by PicoGreen[®] Measurement	0.7 to 1.5 µg in 25 to 100 µL per vial	0.7 µg in 26 µL per vial (26 µg/mL)
Functional Activity by PCR Amplification 16S ribosomal RNA gene	~ 1500 bp amplicon	~ 1500 bp amplicon
OD₂₆₀/OD₂₈₀ Ratio	1.7 to 2.0	1.8
Bacterial Inactivation 10% of total yield plated on Tryptic Soy Agar ^{3,4}	No viable bacteria detected	No viable bacteria detected

¹The bacterial preparation used for extraction of genomic DNA was produced by inoculation of the deposited material into Tryptic Soy Broth. After incubation for 24 hours at 37°C, genomic DNA was extracted using proprietary technology.

²Also consistent with *Shigella* species

³7 days at 37°C in an aerobic atmosphere

⁴An extraction procedure was used that has been shown to consistently inactivate 100% of Gram-positive and Gram-negative bacteria.

Date: 10 MAY 2013

Signature: 

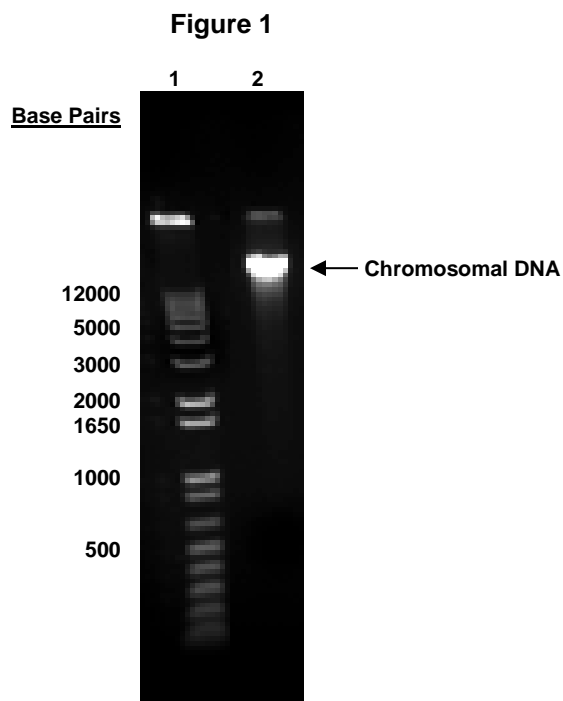
Title: Technical Manager, BEI Authentication or designee

ATCC[®], on behalf of BEI Resources, hereby represents and warrants that the material provided under this certificate has been subjected to the tests and procedures specified and that the results described, along with any other data provided in this certificate, are true and accurate to the best of ATCC[®]'s knowledge.

ATCC[®] is a trademark of the American Type Culture Collection.

You are authorized to use this product for research use only. It is not intended for human use.





Lane 1: Invitrogen™ TrackIt™ 1 Kb Plus DNA Ladder
Lane 2: 200 ng of NR-19884