

**Total RNA from *Oncomelania hupensis* subsp. *formosana*, Pu Yen Isolate**

**Catalog No. NR-42579**

This reagent is the tangible property of the U.S. Government.

**Product Description:** Total RNA was extracted from *Oncomelania hupensis* subsp. *formosana*, Pu Yen isolate.

**Lot<sup>1-3</sup>: 121009-3**

**Manufacturing Date: 09OCT2012**

| TEST  | SPECIFICATIONS           | RESULTS                             |
|---|--------------------------|-------------------------------------|
| Concentration   | Report results           | 50 µg in 50 µL per vial (1 µg/µL)   |
| OD <sub>260</sub> /OD <sub>280</sub> Ratio                              | 1.85 to 2.00             | 2.00                                |
| Qualification by RT-PCR<br>Amplification of myoglobin gene <sup>4</sup> | ~ 189 base pair amplicon | ~ 189 base pair amplicon (Figure 1) |

<sup>1</sup>QC testing was performed by the Biomedical Research Institute, Rockville, MD (NIH-NIAID Contract HHSN2722010000051)

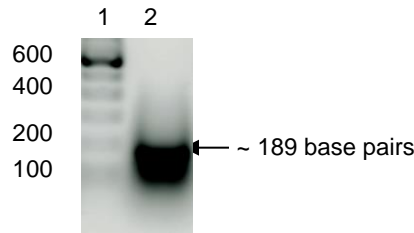
<sup>2</sup>Total RNA was extracted by RNAzol<sup>®</sup> RT (Molecular Research Center, Inc.) according to the manufacturer's instructions.

<sup>3</sup>Snails (> 5 mm) were treated with 100 µg/mL ampicillin overnight to reduce rotifer and bacterial contamination prior to processing.

<sup>4</sup>Primers were designed to amplify 189 base pairs (positions 108-296) of the myoglobin gene of *Biomphalaria glabrata* (GenBank: AY314976).

**Figure 1: Amplification of myoglobin gene for qualification by RT-PCR.**

Lane 1: 100 base pair ladder  
Lane 2: 189 base pair amplicon



**Date:** 20 MAY 2013

**Signature:**

**Title:** Technical Manager, BEI Authentication or designee

ATCC<sup>®</sup>, on behalf of BEI Resources, hereby represents and warrants that the material provided under this certificate has been subjected by the contractor to the tests and procedures specified and that the results described, along with any other data provided in this certificate, are true and accurate to the best of ATCC<sup>®</sup>'s knowledge.

ATCC<sup>®</sup> is a trademark of the American Type Culture Collection.

You are authorized to use this product for research use only. It is not intended for human use.

