

**Escherichia coli, Strain 85.1284**

**Catalog No. NR-17663**

**Product Description:** *Escherichia coli* (*E. coli*), strain 85.1284, serotype O6:H31, was isolated in 1985 from a human in the USA; it has been typed as an extraintestinal pathogenic *Escherichia coli* (ExPEC) strain.

**Lot<sup>1</sup>: 61175010**

**Manufacturing Date: 23AUG2012**

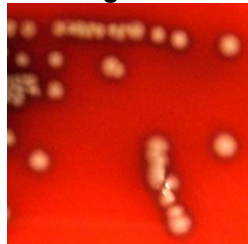
TEST	SPECIFICATIONS	RESULTS
<b>Phenotypic Analysis</b> Cellular morphology Colony morphology <sup>2</sup>  Analytical profile index (API <sup>®</sup> 20 E)	Report results Report results  Consistent with <i>E. coli</i>	Gram-negative rod Circular, convex, entire, smooth and gray (Figure 1) Consistent with <i>E. coli</i>
<b>Genotypic Analysis</b> Sequencing of 16S ribosomal RNA gene (~ 1480 base pairs) Riboprinter <sup>®</sup> Microbial Characterization System	Consistent with <i>E. coli</i> Consistent with <i>E. coli</i>	Consistent with <i>E. coli</i> <sup>3</sup> Consistent with <i>E. coli</i>
<b>PCR Assay of Extracted DNA</b> PCR amplification of chromosomal borne virulence markers <i>stx1</i> <i>stx2</i>	Report results Report results	Negative Negative
<b>Viability (post-freeze)<sup>2</sup></b>	Growth	Growth

<sup>1</sup>*E. coli*, strain 85.1284 was deposited by C. DebRoy, Director, *E. coli* Reference Center, Department of Veterinary and Biomedical Sciences, College of Agricultural Sciences, The Pennsylvania State University, University Park, Pennsylvania. NR-17663 was produced by inoculation of the deposited material into Tryptic Soy broth and grown 24 hours at 37°C in an aerobic atmosphere. Broth inoculum was added to kolles which were grown 24 hours at 37°C in an aerobic atmosphere to produce this lot. Purity of this lot was assessed for 7 days under propagation conditions.

<sup>2</sup>24 hours at 37°C in an aerobic atmosphere on Tryptic Soy agar with 5% defibrinated sheep blood

<sup>3</sup>Also consistent with *Shigella* species

**Figure 1**



**Date:** 19 MAY 2015

**Signature:**

BEI Resources Authentication

ATCC<sup>®</sup>, on behalf of BEI Resources, hereby represents and warrants that the material provided under this certificate has been subjected to the tests and procedures specified and that the results described, along with any other data provided in this certificate, are true and accurate to the best of ATCC<sup>®</sup>'s knowledge.

ATCC<sup>®</sup> is a trademark of the American Type Culture Collection. You are authorized to use this product for research use only. It is not intended for human use.

