

# Certificate of Analysis for HM-904

## Staphylococcus epidermidis, Strain NIHLM020

Catalog No. HM-904

**Product Description:** *Staphylococcus epidermidis* (*S. epidermidis*), strain NIHLM020 was isolated in 2008 from an axilla of a healthy 24-year-old white male volunteer in the United States.

Lot<sup>1,2</sup>: 61646425

Manufacturing Date: 11APR2013

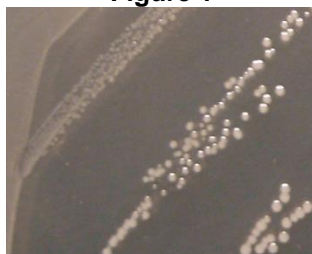
| TEST  | SPECIFICATIONS  | RESULTS   |
|---|---|---|
| <b>Phenotypic Analysis</b><br>Cellular morphology<br>Colony morphology <sup>3</sup>   | Report results<br>Report results  | Gram-positive cocci<br>Circular, low convex, entire, smooth and cream (Figure 1)    |
| <b>Genotypic Analysis</b><br>Sequencing of 16S ribosomal RNA gene (~ 1490 base pairs) | ≥ 99% identical to GenBank: AKGW01000059 ( <i>S. epidermidis</i> , strain NIHLM020) | ≥ 99% identical to GenBank: AKGW01000059 ( <i>S. epidermidis</i> , strain NIHLM020) |
| <b>Viability (post-freeze)<sup>3</sup></b>  | Growth  | Growth  |

<sup>1</sup>Quality control of HMP material is only performed to demonstrate that the material distributed by BEI Resources is identical to the deposited material. It should not be considered a complete characterization of the deposited organism.

<sup>2</sup>*S. epidermidis*, strain NIHLM020 was deposited by Julia A. Segre, Ph.D., Senior Investigator, Epithelial Biology Section, National Human Genome Research Institute, National Institutes of Health, Bethesda, Maryland, USA. HM-904 was produced by inoculation of the deposited material into Nutrient broth and grown 24 hours at 37°C and aerobic atmosphere. Broth inoculum was added to kolles which were grown 24 hours at 37°C and aerobic atmosphere to produce this lot.

<sup>3</sup>24 hours at 37°C and aerobic atmosphere on Nutrient agar

Figure 1



Date: 12 JUN 2013

Signature:

Title:

Technical Manager, BEI Authentication or designee

ATCC®, on behalf of BEI Resources, hereby represents and warrants that the material provided under this certificate has been subjected to the tests and procedures specified and that the results described, along with any other data provided in this certificate, are true and accurate to the best of ATCC®'s knowledge.

ATCC® is a trademark of the American Type Culture Collection.

You are authorized to use this product for research use only. It is not intended for human use.

