

**Monoclonal Anti-*Mycobacterium leprae* LAM, Clone 906.7 (produced *in vitro*)****Catalog No. NR-19383**

This reagent is the tangible property of the U.S. Government.

**Product Description:**

Antibody Class: IgG<sub>3</sub>

Antibody Designation: 906.7

Monoclonal antibody to *Mycobacterium leprae* lipoarabinomannan (LAM) was produced in cell culture using a B cell hybridoma generated by the fusion of myeloma cells with immunized mouse splenocytes.

**Lot: mm.906.7.06.10.2010JS****Manufacturing Date: 10JUN2010**

QC testing was performed by Colorado State University under the Leprosy Research Support Contract (NIH). The Colorado State University documentation for lot mm.906.7.06.10.2010JS is attached.

ATCC<sup>®</sup>, on behalf of BEI Resources, hereby represents and warrants that the material provided under this certificate has been subjected by the contractor to the tests and procedures specified and that the results described, along with any other data provided in this certificate, are true and accurate to the best of ATCC<sup>®</sup>'s knowledge.

ATCC<sup>®</sup> is a trademark of the American Type Culture Collection.

You are authorized to use this product for research use only. It is not intended for human use.



## TB Contract Antibody QC Sheet

**General Information:** Mouse monoclonal antibody 906.7 (anti-LAM)

Product: mouse monoclonal 906.7 5d culture supernatant, 1 ml aliquots, lyophilized

Lot Number: mm.906.7.06.10.2010JS

BEI Catalogue number: NR-19383

Species: *Mycobacterium leprae*

Strain: N/A Type: mouse mAb IgG3 subclass

### Production Information:

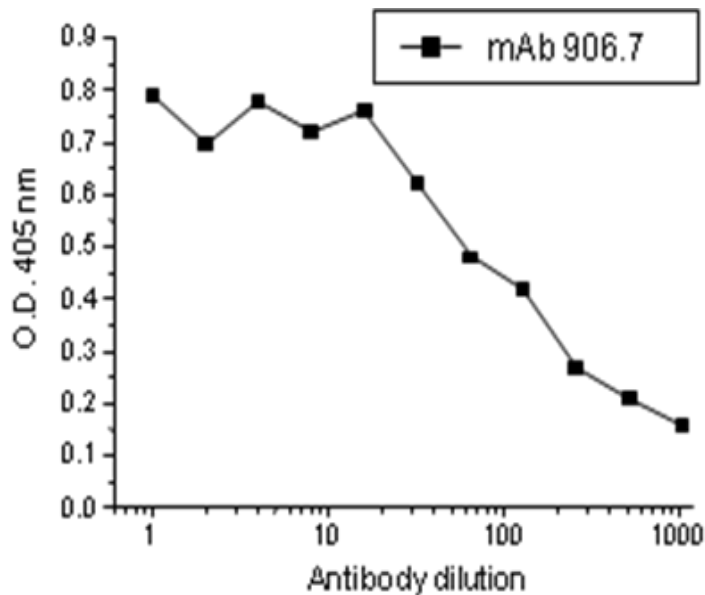
Cell Line: N/A Notebook/pp: John Spencer, Notebook #4, pp 64-65

Amount of supernatant harvested: 40 ml Clarity: clear

**QC Information:** ELISA assay towards *M. tb* LAM. Notebook/pp: same as above Titer: >1:20  
(50% titer at approximately 1:50)

**Special Instructions:** Lyophilized. Store frozen at -70°C once reconstituted with 1 ml distilled water

QC ELISA: Serial two-fold dilutions of 906.7 supernatant from undiluted to 1:1024 dilution



**Aliquot Information:** 4 x 10 ml (original); 20 x 1 ml vials lyophilized

Produced 6/10/10

Lab Supervisor / Date 6/29/10