

Certificate of Analysis for NR-41335

Biomphalaria glabrata, Myoglobin (Mb) Gene Forward Primer

Catalog No. NR-41335

This reagent is the tangible property of the U.S. Government.

Product Description: NR-41335 contains a twenty nucleotide forward primer designed to amplify the myoglobin (Mb) gene from *Biomphalaria glabrata* (*B. glabrata*) when paired with the Mb reverse primer (NR-41371). The sequence of the Mb forward 20-mer is 5'-CAACCAGTCCGACGACGCC-3'.

Lot¹: 61433128

Manufacturing Date: 17MAY2012

TEST	SPECIFICATIONS	RESULTS
PCR Assay of Extracted Nucleic Acid ^{2,3} <i>Biomphalaria glabrata</i> <i>Schistosoma mansoni</i>	~ 190 base pair amplicon No amplicons	~ 190 base pair amplicon (Figure 1) No amplicons
Primer Characteristics ¹ Molecular weight Primer melting temperature (T _m) GC content Primer concentration Moles of primer Micrograms of primer	Report results Report results Report results Report results Report results Report results	6017 g/mol 68.6°C 70.0% 100 µM 3.0 nmoles per vial 18.1 µg per vial
Gene Stability by Quantitative Real-Time PCR	Report results	No statistical significant difference in threshold cycle (C _t) ^{4,5}

¹NR-41335 lot: 61433128 was manufactured by Eurofins MWG Operon. Primer characteristics were determined by the manufacturer. The bulk material was thawed and aliquoted at ATCC®.

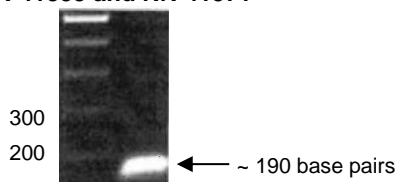
²PCR completed by the Biomedical Research Institute prior to vialing.

³Position 108 to 296 of GenBank: AY314976

⁴20 individual snails were utilized for RT-PCR amplification

⁵ANOVA test (P value = 0.01)

Figure 1: PCR Amplification of *B. glabrata* Mb Gene using NR-41335 and NR-41371



Date: 29 AUG 2013

Signature:

Title:

Technical Manager, BEI Authentication or designee

ATCC®, on behalf of BEI Resources, hereby represents and warrants that the material provided under this certificate has been subjected by the contributor and manufacturer to the tests and procedures specified and that the results described, along with any other data provided in this certificate, are true and accurate to the best of ATCC®'s knowledge.

ATCC® is a trademark of the American Type Culture Collection.

You are authorized to use this product for research use only. It is not intended for human use.

