

***Biomphalaria glabrata*, 28S Ribosomal RNA Gene Forward Primer**

**Catalog No. NR-41336**

This reagent is the tangible property of the U.S. Government.

**Product Description:** NR-41336 contains a twenty nucleotide forward primer designed to amplify the 28S ribosomal RNA gene from *Biomphalaria glabrata* (*B. glabrata*) when paired with the 28S ribosomal RNA reverse primer (NR-41372). The sequence of the 28S ribosomal RNA forward 20-mer is 5'-TCGCCGCGTGCACTTTCCAT-3'.

**Lot<sup>1</sup>: 61433129**

**Manufacturing Date: 17MAY2012**

TEST	SPECIFICATIONS	RESULTS
<b>PCR Assay of Extracted Nucleic Acid<sup>2,3</sup></b> <i>Biomphalaria glabrata</i> <i>Schistosoma mansoni</i>	~ 370 base pair amplicon No amplicons	~ 370 base pair amplicon (Figure 1) No amplicons
<b>Primer Characteristics<sup>1</sup></b> Molecular weight Primer melting temperature (T <sub>m</sub> ) GC content Primer concentration Moles of primer Micrograms of primer	Report results Report results Report results Report results Report results Report results	6020 g/mol 64.5°C 60.0% 100 µM 3.0 nmoles per vial 18.1 µg per vial
<b>Gene Stability by Quantitative Real-Time PCR</b>	Report results	No statistical significant difference in threshold cycle (Ct) <sup>4,5</sup>

<sup>1</sup>NR-41336 lot: 61433129 was manufactured by Eurofins MWG Operon. Primer characteristics were determined by the manufacturer. The bulk material was thawed and aliquoted at ATCC®.

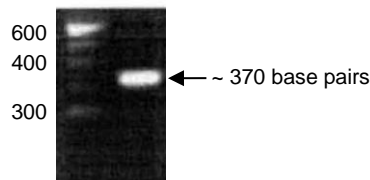
<sup>2</sup>PCR completed by the Biomedical Research Institute prior to vialing.

<sup>3</sup>Position 464 to 832 of GenBank: AF435694.1

<sup>4</sup>20 individual snails were utilized for RT-PCR amplification

<sup>5</sup>ANOVA test (P value = 0.01)

**Figure 1: PCR Amplification of *B. glabrata* 28S Ribosomal RNA using NR-41336 and NR-41372**



**Date:** 29 AUG 2013

**Signature:**

**Title:** Technical Manager, BEI Authentication or designee

ATCC®, on behalf of BEI Resources, hereby represents and warrants that the material provided under this certificate has been subjected by the contributor and manufacturer to the tests and procedures specified and that the results described, along with any other data provided in this certificate, are true and accurate to the best of ATCC®'s knowledge.

ATCC® is a trademark of the American Type Culture Collection.

You are authorized to use this product for research use only. It is not intended for human use.

