

***Biomphalaria glabrata*, 28S Ribosomal RNA Gene Reverse Primer**

Catalog No. NR-41372

This reagent is the tangible property of the U.S. Government.

Product Description: NR-41372 contains a twenty nucleotide reverse primer designed to amplify the 28S ribosomal RNA gene from *Biomphalaria glabrata* (*B. glabrata*) when paired with the 28S ribosomal RNA forward primer (NR-41336). The sequence of the 28S ribosomal RNA reverse 20-mer is 5'-ACCCTCGCTTTCACTGCGCC-3'.

Lot¹: 61500641

Manufacturing Date: 17MAY2012

TEST	SPECIFICATIONS	RESULTS
PCR Assay of Extracted Nucleic Acid^{2,3} <i>Biomphalaria glabrata</i> <i>Schistosoma mansoni</i>	~ 370 base pair amplicon No amplicons	~ 370 base pair amplicon (Figure 1) No amplicons
Primer Characteristics¹ Molecular weight Primer melting temperature (Tm) GC content Primer concentration Moles of primer Micrograms of primer	Report results Report results Report results Report results Report results Report results	5965 g/mol 66.6°C 65.0% 100 µM 3.0 nmoles per vial 17.9 µg per vial
Gene Stability by Quantitative Real-Time PCR	Report results	No statistical significant difference in threshold cycle (Ct) ^{4,5}

¹NR-41372 lot: 61500641 was manufactured by Eurofins MWG Operon. Primer characteristics were determined by the manufacturer. The bulk material was thawed and aliquoted at ATCC®.

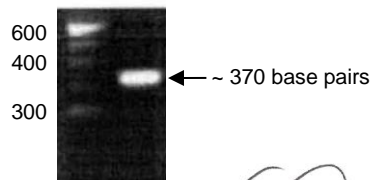
²PCR completed by the Biomedical Research Institute prior to vialing.

³Position 464 to 832 of GenBank: AF435694.1

⁴20 individual snails were utilized for RT-PCR amplification

⁵ANOVA test (P value = 0.01)

Figure 1: PCR Amplification of *B. glabrata* 28S Ribosomal RNA using NR-41336 and NR-41372



Date: 29 AUG 2013

Signature:

Title: Technical Manager, BEI Authentication or designee

ATCC®, on behalf of BEI Resources, hereby represents and warrants that the material provided under this certificate has been subjected by the contributor and manufacturer to the tests and procedures specified and that the results described, along with any other data provided in this certificate, are true and accurate to the best of ATCC®'s knowledge.

ATCC® is a trademark of the American Type Culture Collection.

You are authorized to use this product for research use only. It is not intended for human use.

