

***Biomphalaria glabrata*, Alpha-Tubulin Gene Forward Primer**

Catalog No. NR-41337

This reagent is the tangible property of the U.S. Government.

Product Description: NR-41337 contains a twenty-one nucleotide forward primer designed to amplify the alpha-tubulin gene from *Biomphalaria glabrata* (*B. glabrata*) when paired with the alpha-tubulin reverse primer (NR-41373). The sequence of the alpha-tubulin forward 21-mer is 5'-ACTAGTGGATCCCCCGGGCTG-3'.

Lot¹: 61433130

Manufacturing Date: 17MAY2012

TEST	SPECIFICATIONS	RESULTS
PCR Assay of Extracted Nucleic Acid^{2,3} <i>Biomphalaria glabrata</i> <i>Schistosoma mansoni</i>	~ 120 base pair amplicon No amplicons	~ 120 base pair amplicon (Figure 1) No amplicons
Primer Characteristics¹ Molecular weight Primer melting temperature (T _m) GC content Primer concentration Moles of primer Micrograms of primer	Report results Report results Report results Report results Report results Report results	6423 g/mol 68.4°C 66.7% 100 µM 3.0 nmoles per vial 19.3 µg per vial
Gene Stability by Quantitative Real-Time PCR	Report results	No statistical significant difference in threshold cycle (Ct) ^{4,5}

¹NR-41337 lot: 61433130 was manufactured by Eurofins MWG Operon. Primer characteristics were determined by the manufacturer. The bulk material was thawed and aliquoted at ATCC®.

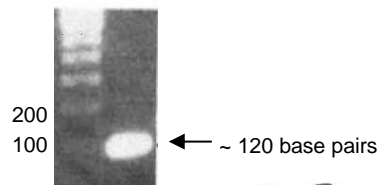
²PCR completed by the Biomedical Research Institute prior to vialing.

³Position 14 to 131 of GenBank: FC857565.1

⁴20 individual snails were utilized for RT-PCR amplification

⁵ANOVA test (P value = 0.01)

Figure 1: PCR Amplification of *B. glabrata* Alpha-Tubulin using NR-41337 and NR-41373



Date: 29 AUG 2013

Signature:

Title: Technical Manager, BEI Authentication or designee

ATCC®, on behalf of BEI Resources, hereby represents and warrants that the material provided under this certificate has been subjected by the contributor and manufacturer to the tests and procedures specified and that the results described, along with any other data provided in this certificate, are true and accurate to the best of ATCC®'s knowledge.

ATCC® is a trademark of the American Type Culture Collection.

You are authorized to use this product for research use only. It is not intended for human use.

