

Respiratory Syncytial Virus (RSV) A2 Nucleoprotein (N) Helper Plasmid, pA2-Nopt

Catalog No. NR-36462

Product Description: The N helper plasmid was constructed from codon-optimized RSV A2 N sequences. The codon-optimized cDNA sequences were synthesized and cloned into the pcDNA™3.1⁽⁺⁾ mammalian expression plasmid (Life Technologies™ Invitrogen™).

Lot¹: 61047089

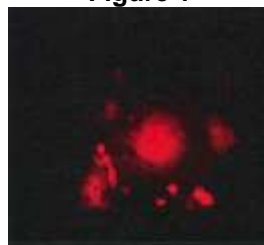
Manufacturing Date: 29MAR2013

TEST	SPECIFICATIONS	RESULTS
Appearance	Report results	Clear and colorless
Confirmation of Plasmid Integrity by Restriction Digestion NR-36462 (undigested) NR-36462 (<i>XhoI</i> and <i>KpnI</i> digested)	Report results 5364 and 1184 base pair bands	6548 base pairs 5364 and 1184 base pair bands
Functional Activity² RSV replication in transfected BHK-21 clone BSR T7/5 cells (3 days post-transfection)	Red fluorescent syncytia observed	Red fluorescent syncytia observed (Figure 1)
PicoGreen® Measurement DNA content DNA concentration	0.5 µg 0.1 µg per µL	0.5 µg 0.1 µg per µL
OD₂₆₀/OD₂₈₀ Ratio	1.7 to 2.0	1.88
Contamination with <i>E. coli</i> Genomic DNA	< 5%	< 5%
Endotoxin	≤ 50 EU/mL	≤ 1.8 EU/mL
Bioburden [colony forming units (cfu)]	≤ 1 cfu per 5 µL	0 cfu per 5 µL

¹Produced in *E. coli*, strain 10-beta (New England Biolabs®) and extracted using an Endo-Free Plasmid Maxi Kit (Qiagen)

²Recombinant RSV was produced by co-transfection of BHK-21 clone BSR T7/5 cells with NR-36460 and four helper plasmids containing genes for A2 large polymerase (NR-36461), nucleoprotein (NR-36462), phosphoprotein (NR-36463) and matrix 2-1 protein (NR-36464).

Figure 1



Date: 24 SEP 2013

Signature:

Dorothy C. Young

Title:

Technical Manager, BEI Authentication or designee

ATCC®, on behalf of BEI Resources, hereby represents and warrants that the material provided under this certificate has been subjected by the contractor to the tests and procedures specified and that the results described, along with any other data provided in this certificate, are true and accurate to the best of ATCC®'s knowledge.

ATCC® is a trademark of the American Type Culture Collection.

You are authorized to use this product for research use only. It is not intended for human use.

