

Schistosoma mansoni, Glyceraldehyde 3-Phosphate Dehydrogenase (GAPDH) Gene Forward Primer

Catalog No. NR-41324

This reagent is the tangible property of the U.S. Government.

Product Description: NR-41324 contains a twenty nucleotide forward primer designed to amplify the glyceraldehyde 3-phosphate dehydrogenase (GAPDH) gene from *Schistosoma mansoni* (*S. mansoni*) when paired with the GAPDH reverse primer (NR-41360). The sequence of the GAPDH forward 20-mer is 5'-AGATGGCCGTGGAGCGATGC-3'.

Lot¹: 61433117

Manufacturing Date: 17MAY2012

TEST	SPECIFICATIONS	RESULTS
PCR Assay of Extracted Nucleic Acid^{2,3,4} Amplicon size	~ 115 base pair amplicon	~ 115 base pair amplicon (Figure 1)
Primer Characteristics¹ Molecular weight Primer melting temperature (Tm) GC content Primer concentration Moles of primer Micrograms of primer	Report results Report results Report results Report results Report results Report results	6223 g/mol 66.6°C 65.0% 100 µM 3.0 nmoles per vial 18.7 µg per vial
Gene Stability by Quantitative Real-Time PCR	Report results	No statistical significant difference in threshold cycle (Ct) ^{5,6}

¹NR-41324 lot: 61433117 was manufactured by Eurofins MWG Operon. Primer characteristics were determined by the manufacturer. The bulk material was thawed and aliquoted at ATCC®.

²PCR completed by the Biomedical Research Institute prior to vialing.

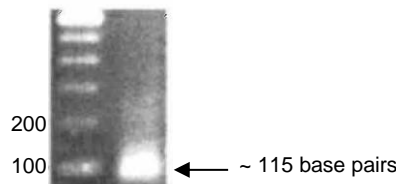
³Position 938 to 1048 of GenBank: M92359.1

⁴This test showed no cross amplification in mice

⁵20 individual snails were utilized for RT-PCR amplification

⁶ANOVA test (P value = 0.01)

Figure 1: PCR Amplification of *S. mansoni* GAPDH Gene using NR-41324 and NR-41360



Date: 16 SEP 2013

Signature:

Title:

Technical Manager, BEI Authentication or designee

ATCC®, on behalf of BEI Resources, hereby represents and warrants that the material provided under this certificate has been subjected by the contributor and vendor to the tests and procedures specified and that the results described, along with any other data provided in this certificate, are true and accurate to the best of ATCC®'s knowledge.

ATCC® is a trademark of the American Type Culture Collection.

You are authorized to use this product for research use only. It is not intended for human use.

