

Schistosoma mansoni, Alpha-Tubulin Gene Forward Primer

Catalog No. NR-41330

This reagent is the tangible property of the U.S. Government.

Product Description: NR-41330 contains a twenty-two nucleotide forward primer designed to amplify the alpha-tubulin gene from *Schistosoma mansoni* (*S. mansoni*) when paired with the alpha-tubulin reverse primer (NR-41366). The sequence of the alpha-tubulin forward 22-mer is 5'-TGGCGGTGGTACTGGTTCTGGG-3'.

Lot¹: 61433123

Manufacturing Date: 17MAY2012

| TEST | SPECIFICATIONS | RESULTS |
|---|--|--|
| PCR Assay of Extracted Nucleic Acid^{2,3,4} Amplicon size | ~ 325 base pair amplicon | ~ 325 base pair amplicon (Figure 1) |
| Primer Characteristics¹ Molecular weight Primer melting temperature (Tm) GC content Primer concentration Moles of primer Micrograms of primer | Report results Report results Report results Report results Report results Report results | 6870 g/mol 68.3°C 63.6% 100 µM 3.0 nmoles per vial 20.6 µg per vial |
| Gene Stability by Quantitative Real-Time PCR | Report results | No statistical significant difference in threshold cycle (Ct) ^{5,6} |

¹NR-41330 lot: 61433123 was manufactured by Eurofins MWG Operon. Primer characteristics were determined by the manufacturer. The bulk material was thawed and aliquoted at ATCC®.

²PCR completed by the Biomedical Research Institute prior to vialing.

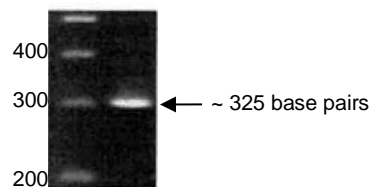
³Position 423 to 743 of GenBank: M80214.1

⁴This test showed no cross amplification in mice


⁵20 individual snails were utilized for RT-PCR amplification

⁶ANOVA test (P value = 0.01)

Figure 1: PCR Amplification of *S. mansoni* Alpha-Tubulin using NR-41330 and NR-41366



Date: 18 SEP 2013

Signature: 
Title: Technical Manager, BEI Authentication or designee

ATCC®, on behalf of BEI Resources, hereby represents and warrants that the material provided under this certificate has been subjected by the contributor and vendor to the tests and procedures specified and that the results described, along with any other data provided in this certificate, are true and accurate to the best of ATCC®'s knowledge.

ATCC® is a trademark of the American Type Culture Collection.

You are authorized to use this product for research use only. It is not intended for human use.

