

**Schistosoma mansoni, Alpha-Tubulin Gene Reverse Primer**

**Catalog No. NR-41366**

This reagent is the tangible property of the U.S. Government.

**Product Description:** NR-41366 contains a twenty nucleotide reverse primer designed to amplify the alpha-tubulin gene from *Schistosoma mansoni* (*S. mansoni*) when paired with the alpha-tubulin forward primer (NR-41330). The sequence of the alpha-tubulin reverse 20-mer is 5'-AGCGCACCATCGAAGCGCAG-3'.

**Lot<sup>1</sup>: 61500646**

**Manufacturing Date: 17MAY2012**

TEST	SPECIFICATIONS	RESULTS
<b>PCR Assay of Extracted Nucleic Acid<sup>2,3,4</sup></b> Amplicon size	~ 325 base pair amplicon	~ 325 base pair amplicon (Figure 1)
<b>Primer Characteristics<sup>1</sup></b> Molecular weight Primer melting temperature (Tm) GC content Primer concentration Moles of primer Micrograms of primer	Report results Report results Report results Report results Report results Report results	6121 g/mol 66.6°C 65.0% 100 µM 3.0 nmoles per vial 18.4 µg per vial
<b>Gene Stability by Quantitative Real-Time PCR</b>	Report results	No statistical significant difference in threshold cycle (Ct) <sup>5,6</sup>

<sup>1</sup>NR-41366 lot: 61500646 was manufactured by Eurofins MWG Operon. Primer characteristics were determined by the manufacturer. The bulk material was thawed and aliquoted at ATCC®.

<sup>2</sup>PCR completed by the Biomedical Research Institute prior to vialing.

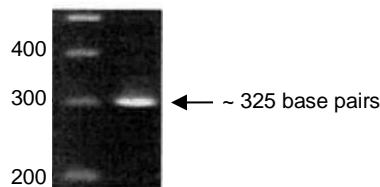
<sup>3</sup>Position 423 to 743 of GenBank: M80214.1

<sup>4</sup>This test showed no cross amplification in mice

<sup>5</sup>20 individual snails were utilized for RT-PCR amplification

<sup>6</sup>ANOVA test (P value = 0.01)

**Figure 1: PCR Amplification of *S. mansoni* Alpha-Tubulin Gene using NR-41330 and NR-41366**



**Date:** 18 SEP 2013

**Signature:**

**Title:**

Technical Manager, BEI Authentication or designee

ATCC®, on behalf of BEI Resources, hereby represents and warrants that the material provided under this certificate has been subjected by the contributor and vendor to the tests and procedures specified and that the results described, along with any other data provided in this certificate, are true and accurate to the best of ATCC®'s knowledge.

ATCC® is a trademark of the American Type Culture Collection.

You are authorized to use this product for research use only. It is not intended for human use.

